

KC3000 Series Display Circuit Board Replacement

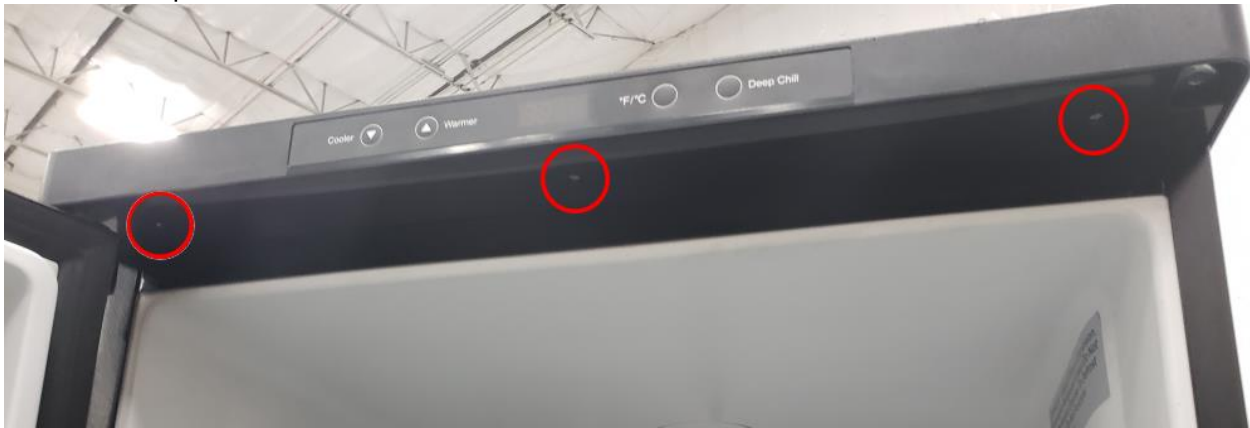
Tools Required:

- Phillips Screwdriver
- Flathead Screwdriver
- Needle Nose Pliers

NOTE: Disconnect the unit from the power source before attempting any repairs

Step 1: Remove and replace the display circuit board cover

- Remove the 3 Phillip's head screws that secure the cover to the circuit board



- Remove the cover

Step 2: Remove the display circuit board housing

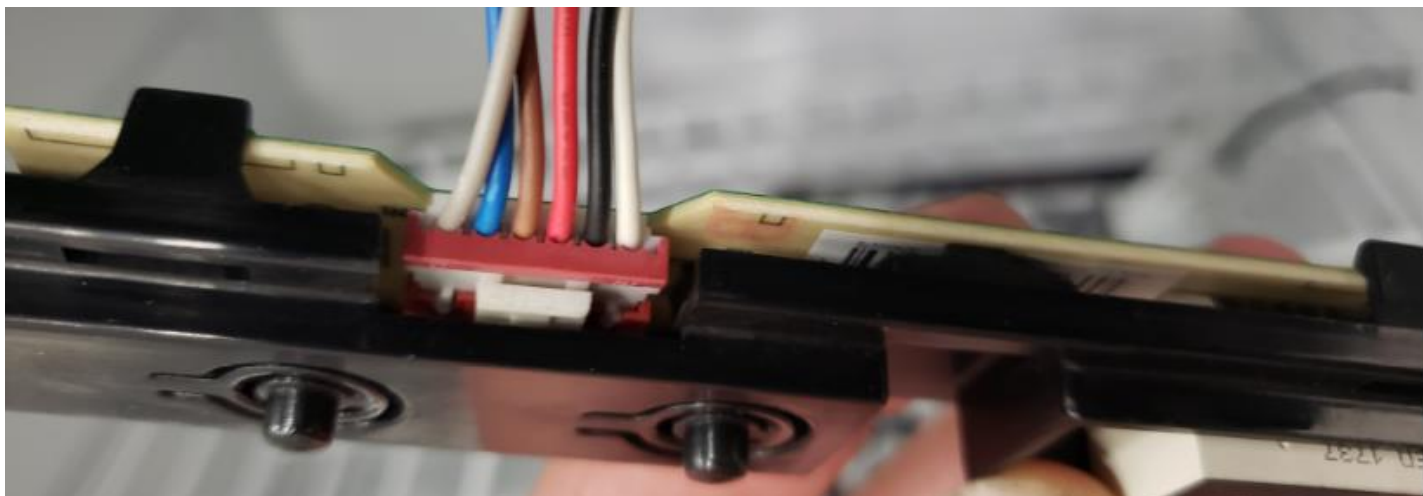
- Remove the two Phillip's head mounting screws that secure the board assembly to the unit



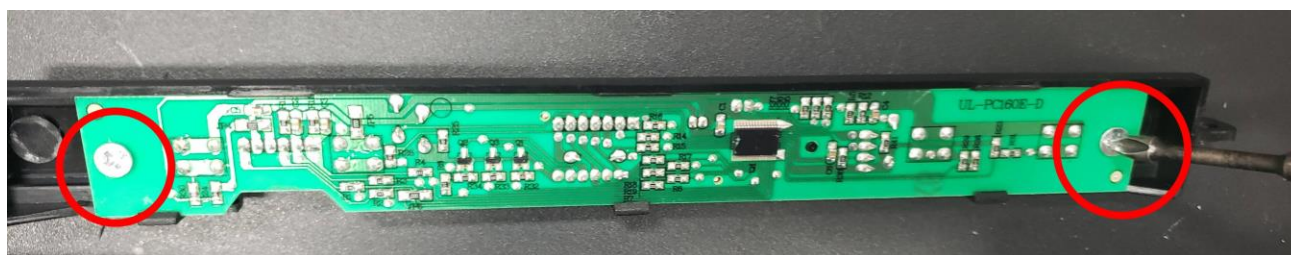
- Pull the board housing assembly out of the unit (Note: The board and bracket need to be slid back towards the inside of the unit and then lowered to gain access to the electrical connector)

Step 3: Remove the display circuit board from the housing and replace

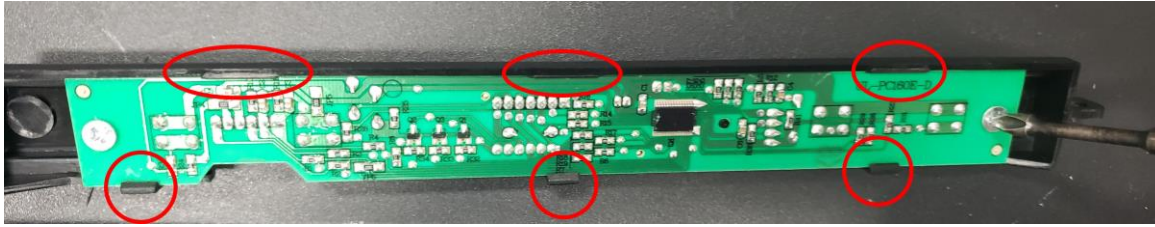
- Unplug the electrical connector (Note: This connector has a lock you must squeeze to release)



- Remove the two Phillip's head screws securing the circuit board to the housing



- Unclip the circuit board from the 6 securing clips



- Making sure to line the buttons up between the board and the housing, clip the new board into place.



- Install the two Phillip's head screws that secure the board to the housing.

NOTE: After installing the new board, push the buttons on the housing and make sure you feel them click to assure they are lined up properly.

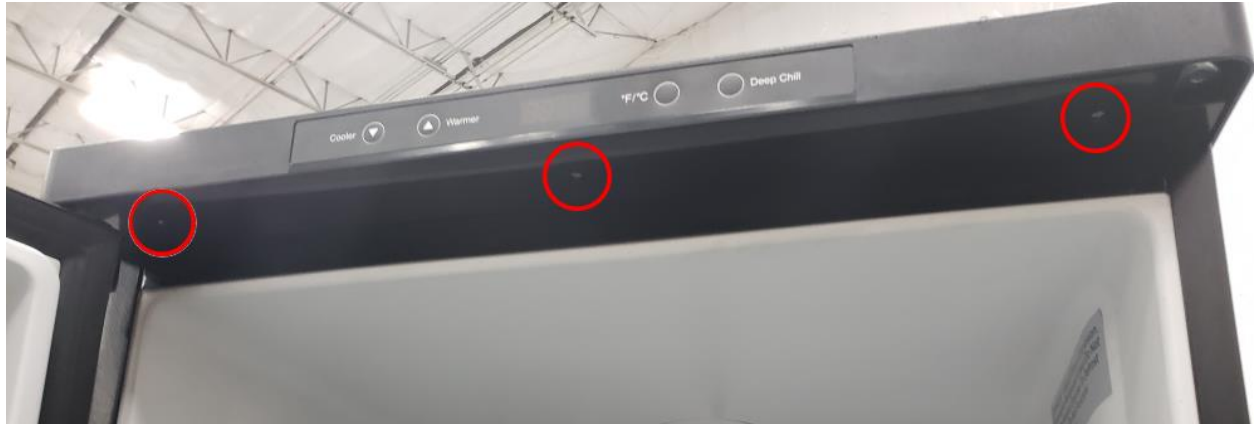
- Reinstall the electrical connector.

Step 4: Reinstall the display board and housing into the unit

- Line the housing up with the unit and install the two Phillip's head screws



- Line the cover up over the housing and install the remaining 3 Phillip's head screws.



Procedure Complete! Plug the unit in and test all the controls work.

Note: If you laid the unit down at any point, wait 2-3 hours before plugging the unit back in.