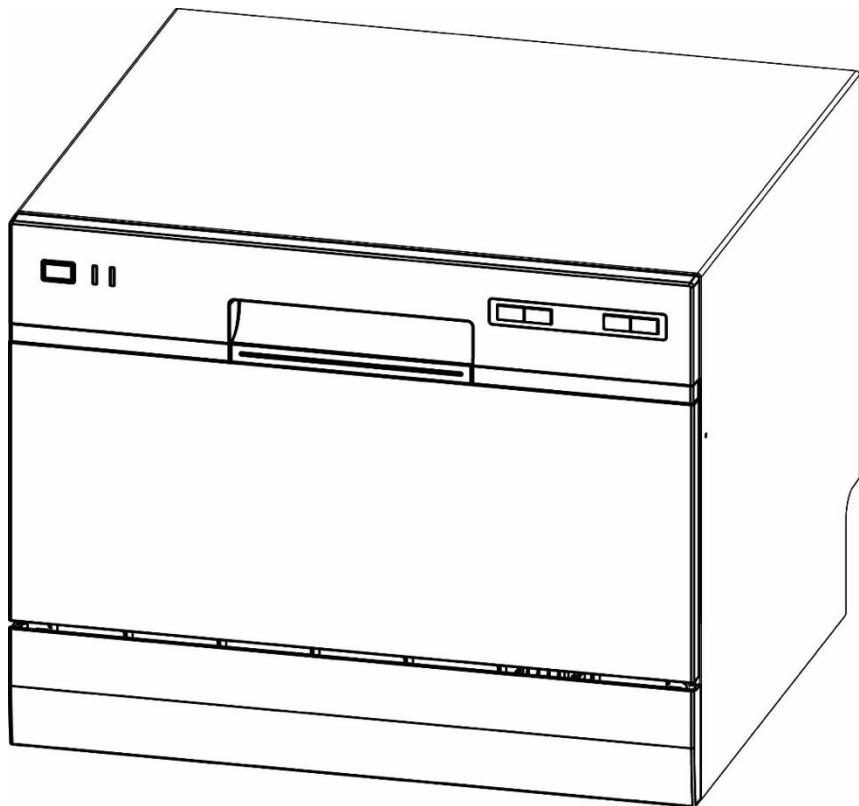


# SERVICE MANUAL

## EdgeStar Countertop Dishwasher

MODEL(s):

DWP62BL  
DWP62SV  
DWP62WH



**CAUTION: READ ALL SAFETY PRECAUTIONS IN THIS MANUAL BEFORE SERVICING THE UNIT**

# CONTENTS

CONTENTS .....	1
SAFETY PRECAUTIONS .....	1
ELECTRICAL SAFETY .....	2
GENERAL SAFETY .....	3
SPECIFICATIONS .....	4
EXPLODED VIEWS AND PARTS LISTS .....	5
WIRING DIAGRAM .....	10
CONTROL PANEL .....	11
DETERGENT AND RINSE AID .....	12
DISASSEMBLY AND PARTS REPLACEMENT .....	13
DRAIN PUMP REMOVAL AND REPLACEMENT .....	13
POWER CORD REMOVAL AND REPLACEMENT INSTRUCTIONS .....	18
AIR BREAKER REMOVAL AND REPLACEMENT INSTRUCTIONS .....	20
BASEBOARD REMOVAL AND REPLACEMENT .....	25
CHECK VALVE REMOVAL AND REPLACEMENT .....	27
FLOAT ASSEMBLY, FLOAT MICRO SWITCH AND FLOAT REMOVAL AND REPLACEMENT INSTRUCTIONS .....	34
HEATING ELEMENT REMOVAL AND REPLACEMENT .....	36
INLET VALVE REMOVAL AND REPLACEMENT .....	41
DOOR COMPONENT REPLACEMENT REMOVAL AND REPLACEMENT .....	43
DOOR GASKET REMOVAL AND REPLACEMENT INSTRUCTIONS .....	50
DOOR SWITCH REMOVAL AND REPLACEMENT INSTRUCTIONS .....	51
TROUBLESHOOTING .....	54

## SAFETY PRECAUTIONS

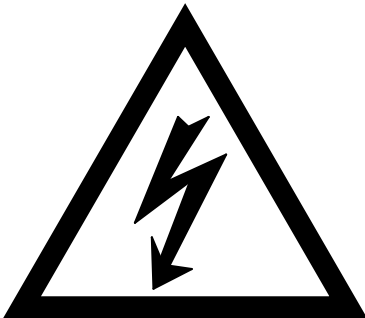
**WARNING:** This manual and the information contained herein is intended for use by certified technicians. The manufacturer or seller is not responsible for the interpretation or misuse of the information provided, nor does it assume any liability in connection with its use.

The safeguards and warnings indicated in this manual do not cover all possible conditions which may occur. Common sense, caution, and care must be exercised.


- To prevent electric shock, always unplug an appliance from the power supply before attempting any service.
- Disconnect the power cord by grasping the plug, not the cord.
- Do not bypass, cut, or remove the grounding plug.
- Prevent water from spilling onto electric elements or the machine parts.
- Always refer to the rating label on the appliance for rated current and voltage.
- Always check line voltage and amperage.
- Always use exact replacement parts.
- Any attempt to repair a major appliance may result in personal injury and property damage.

## Electrical Safety

- Do not exceed the power outlet ratings.
- It is recommended that the unit be connected to its own circuit.
- A standard electrical supply (120V, 60Hz), that is properly grounded in accordance with the National Electrical Code and all state and local codes and ordinances is required.
- Do not use outlets that can be turned off by a switch or pull chain.
- Always turn the unit off and unplug it from the outlet when cleaning.
- Unplug the unit if it is not going to be used for an extended period of time.
- Do not operate the unit with a power plug missing the ground plug, a damaged cord, or a loose socket.
- Be sure the appliance is properly grounded.
- Do not bypass, cut, or remove the grounding plug.
- If the power cord is damaged, it must be replaced by the manufacturer or a qualified technician.
- Do not use extension cords or power strips with this unit. You may need to contact an electrician if it is necessary to use a longer cord or if you do not have a properly grounded outlet. Do not modify the power cord's length or share the outlet with other appliances.
- Do not start or stop the unit by switching the electrical circuit's power on and off.
- Immediately unplug the unit if it makes strange sounds, emits an odor or smoke and contact customer service.
- Do not remove any part of the casing unless instructed by an authorized technician.
- Before the appliance is removed from service or discarded, remove the door and cut off the power cord.



**! WARNING**



**Electrical Shock Hazard**  
Connect to a grounded 3 prong outlet with an individual 12 amp branch circuit protected by a 12 amp circuit breaker. Connect to individual branch circuit.  
Do not remove ground prong.  
Do not use an adapter.  
Do not use an extension cord.  
Failure to follow these instructions can result in electrical shock, fire, or death.

## General Safety

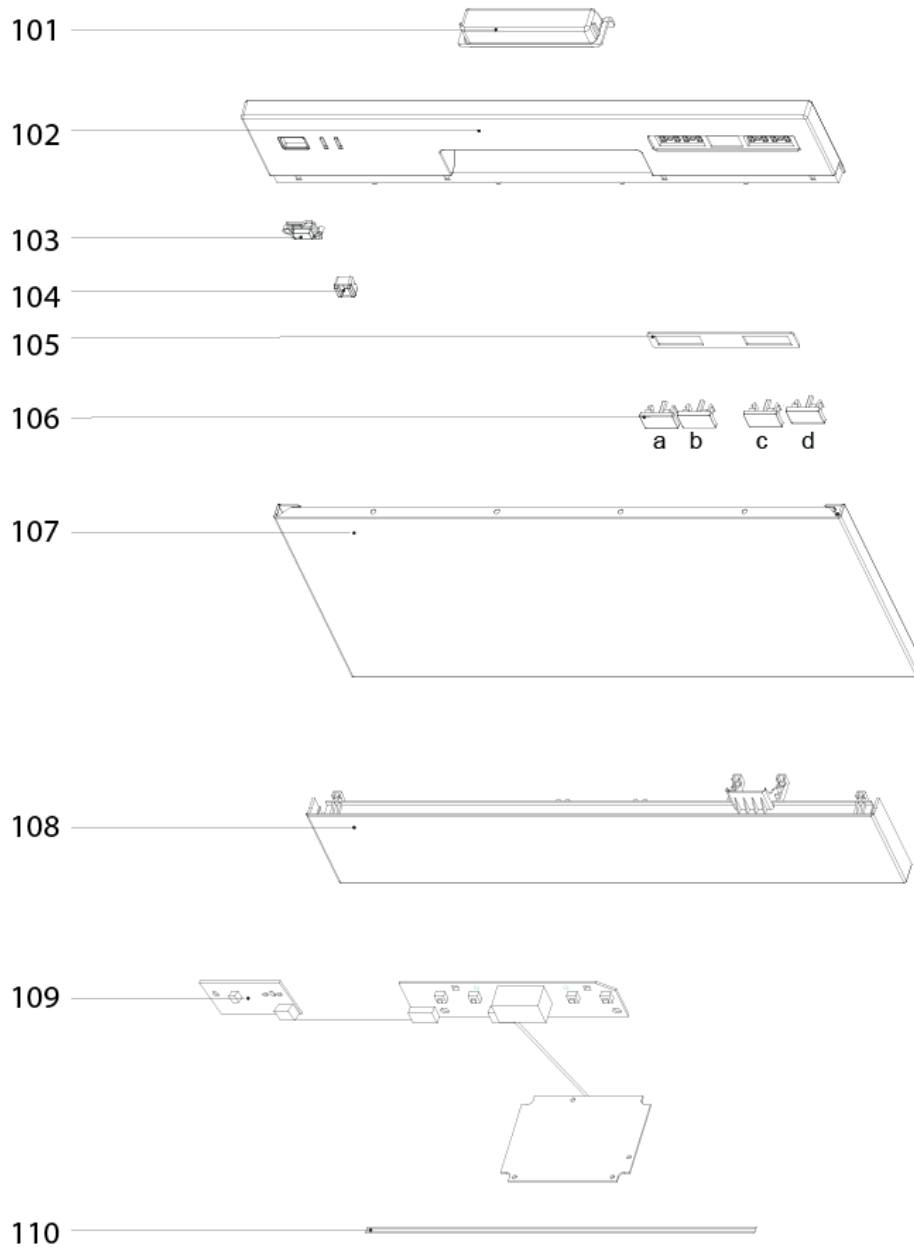
- Always unplug an appliance from the power supply before attempting any service. Disconnect the power cord by grasping the plug, not the cord.
- Do not allow children or pets to play on or in the appliance.
- This machine is not intended for use by persons (including children) with reduced physical, sensory or mental capabilities, or lack of experience and knowledge, unless they have been given supervision or instruction concerning use of the machine by a person responsible for their safety.
- Do not install or store this appliance where it will be exposed to the weather.
- Disconnect from the power socket before cleaning or maintenance.
- If the plug (power cord) is damaged, it must be replaced by the manufacturer or an authorized service representative.
- This machine shall be repaired only by an authorized service representative. Only genuine replacement parts should be used.
- If connected to a circuit protected by fuses, use time-delay fuses with this appliance.
- Please do not close the door with excessive force. If it is found difficult to close the door, please check for obstruction.
- When you plan to dispose of this unit in the future, please comply with the local waste disposal regulations. Remove the door so that children and pets will not be trapped in the unit.

# Specifications

Description of product	Dishwasher (Portable / Countertop)
Model	DWP62BL / DWP62WH / DWP62SV
Color	Black / White / Silver
Number of Place Settings	6
Maximum Diameter of place Settings	10.5"
Wash Cycles	7
Accessories	Quick Connect Adapter Faucet Adapter Drain Hose Water Inlet Hose
Max Water Temperature	149°F (65°C).
Water consumption (Normal Wash)	2.85 gallons
Spray Arms	Plastic
Drain Pump	Yes
Interior	Stainless Steel (430 SS)
Voltage / Frequency	120V AC / 60Hz
Input Power	1160W
Current	5.7 A
Delay Start	1-24 Hour
Unit Dimensions H x W x D	17-1/4" x 21-11/16" x 19-11/16"
Box Dimensions H x W x D	20-1/16" x 21-7/8" x 23-13/16"
Net Weight	44.1 lbs.
Operating Temperature (Normal Wash)	125°F
Noise Level	52 dB
Water pressure	15-20 psi

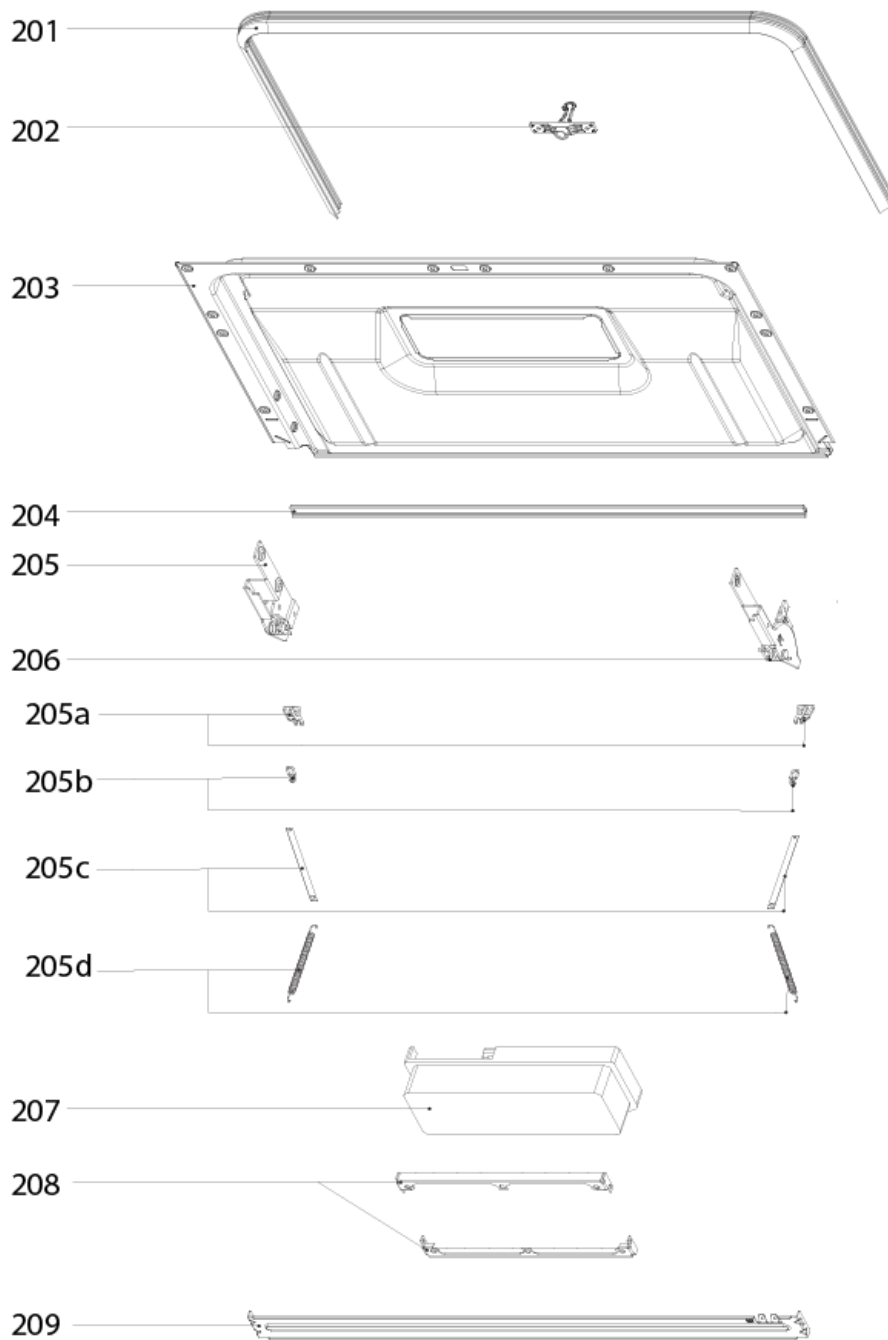
# Exploded Views and Parts Lists

**\*\*NOTE:** Not all parts are stocked or considered serviceable / replaceable by manufacturer



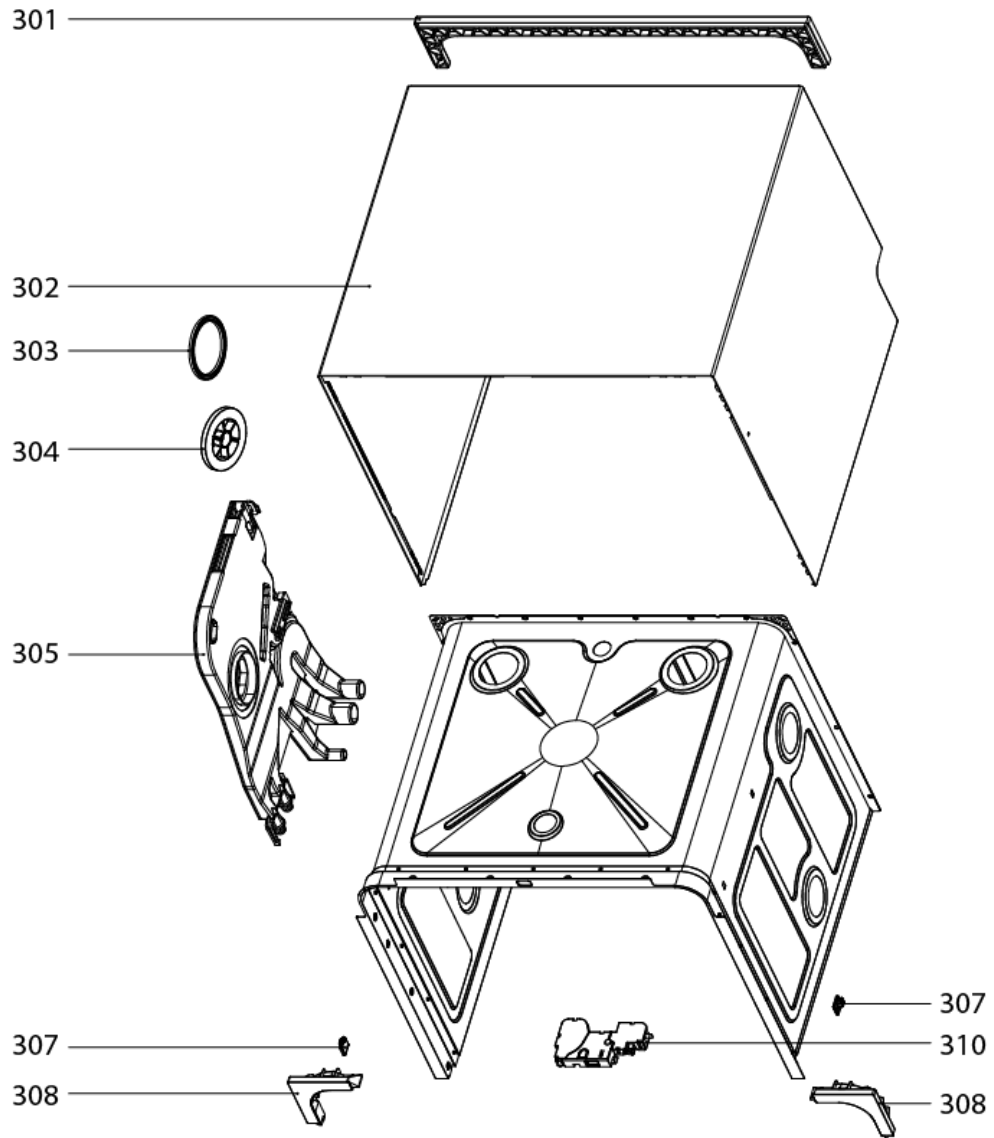
NO.	Description	Qty
101	Handle Cover	1
102	Control Panel Cover	1
103	Power Button	1
104	Light Cover	1
105	Button Cover	1
106a	Program Button	1
106b	Delay Increase Button	1

NO.	Description	Qty
106c	Delay Decrease Button	1
106d	Start Button	1
107	Outer Door	1
108	Baseboard	1
109	Power and Display PCB	1
110	Unit Wiring	1



NO.	Description	Qty
201	Upper Door Gasket	1
202	Door Latch	1
203	Inner Door	1
204	Lower Door Gasket	1
205	Hinge Assembly(Left)	1
205-a	Guide Vane	2
205-b	Friction Bar Hanger	2

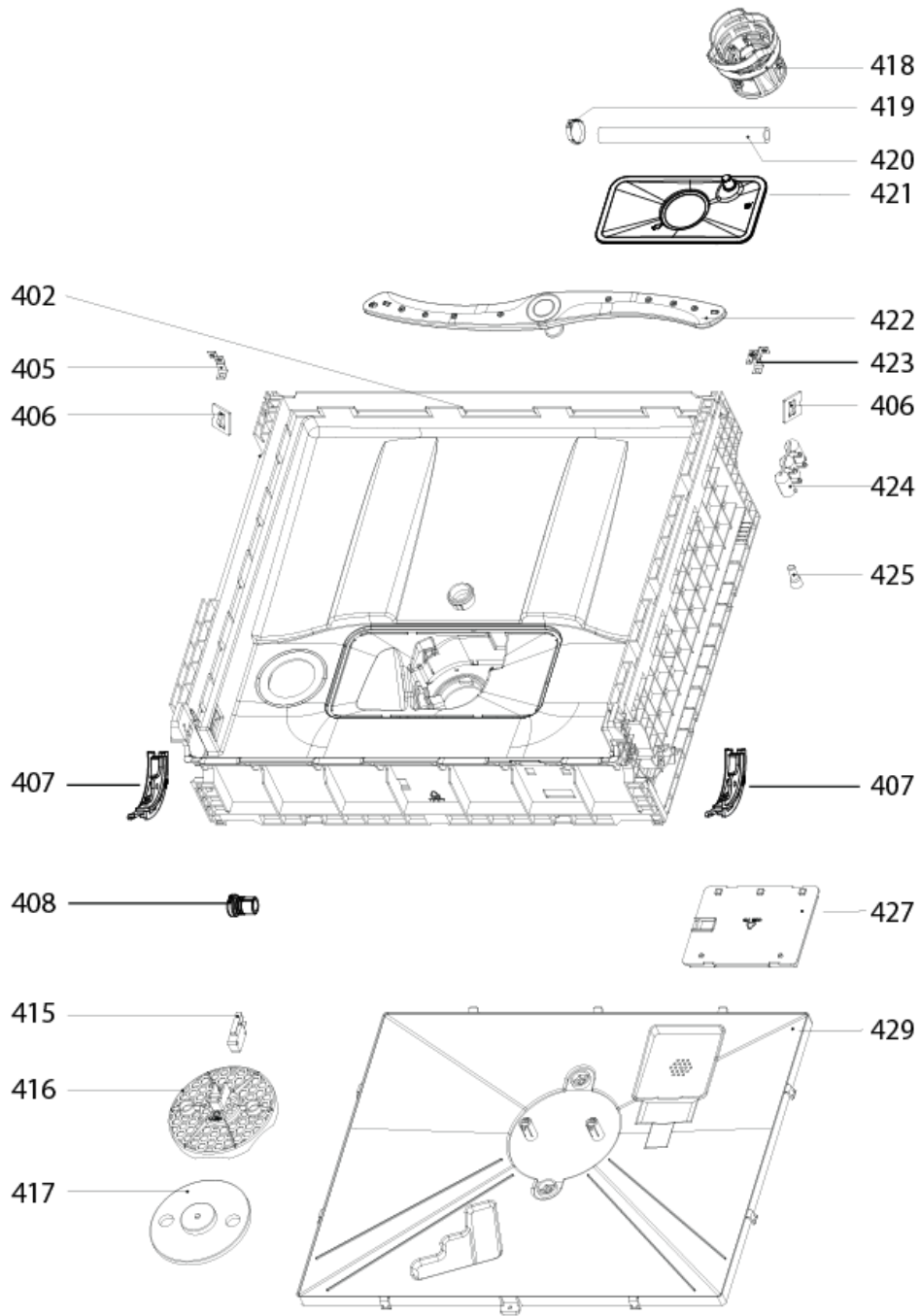
NO.	Description	Qty
205-c	Friction Strip	2
205-d	Spring	2
206	Hinge Assembly(Right)	1
207	Soap Dispenser	1
208	Dispenser Bracket	2
209	Hinge Join Panel	1



NO.	Description	Qty
301	Upper Back Cover	1
302	Outer Shell	1
303	Air Breaker Washer	1
304	Air Breaker Nut	1

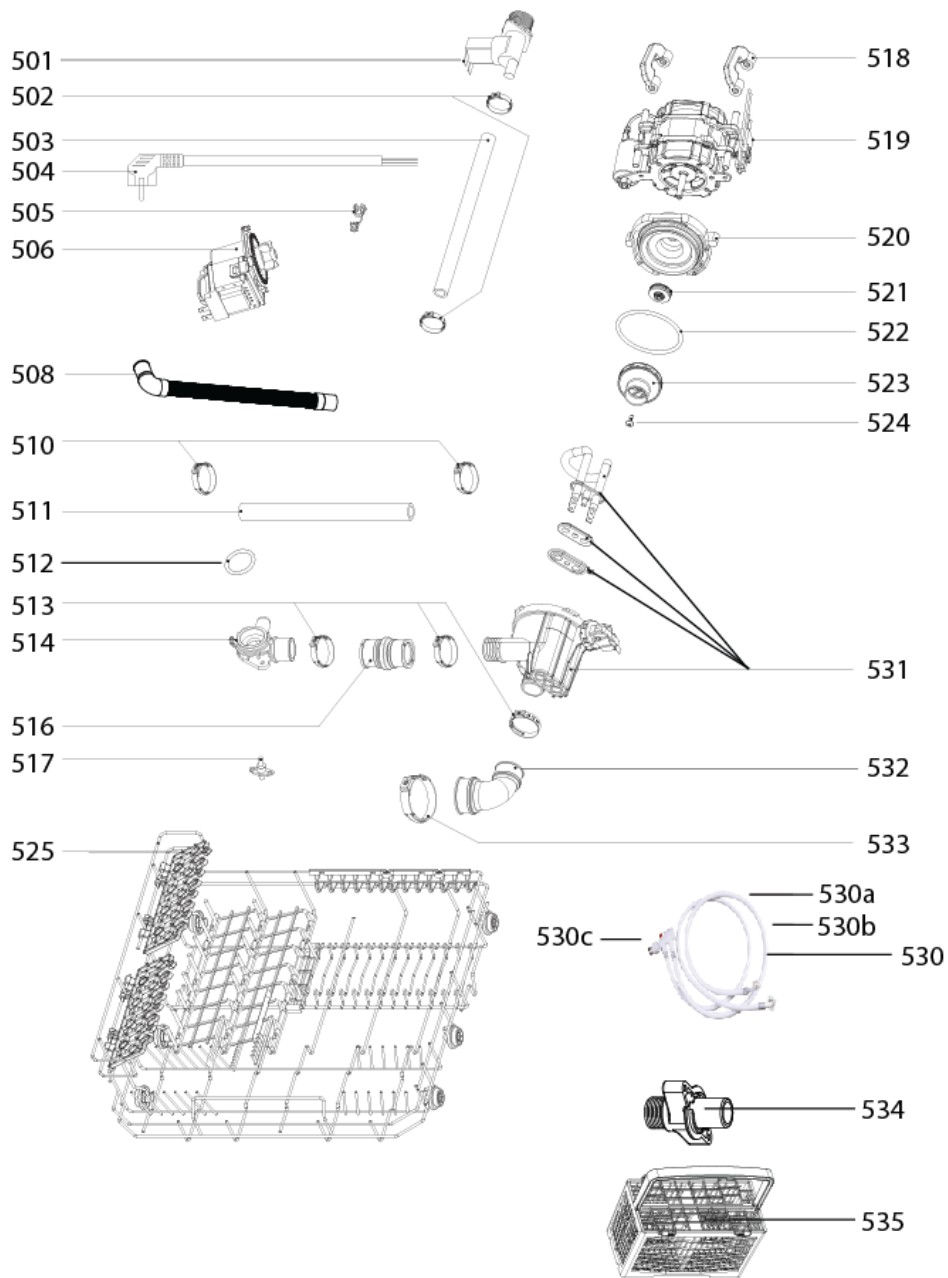
NO.	Description	Qty
305	Air Breaker Assembly	1
307	Door Caps	2
308	Upper Corner Cover Plate	2
310	Door Switch	1





NO.	Description	Qty
402	Base Plate	1
405	Left Base Plate Bracket	1
406	Door Spring Bracket	2
407	Friction Strip Guide	2
408	Check Valve	1
415	Float Microswitch	1
416	Float Switch Holder	1
417	Float	1
418	Upper Cylinder Filter	1

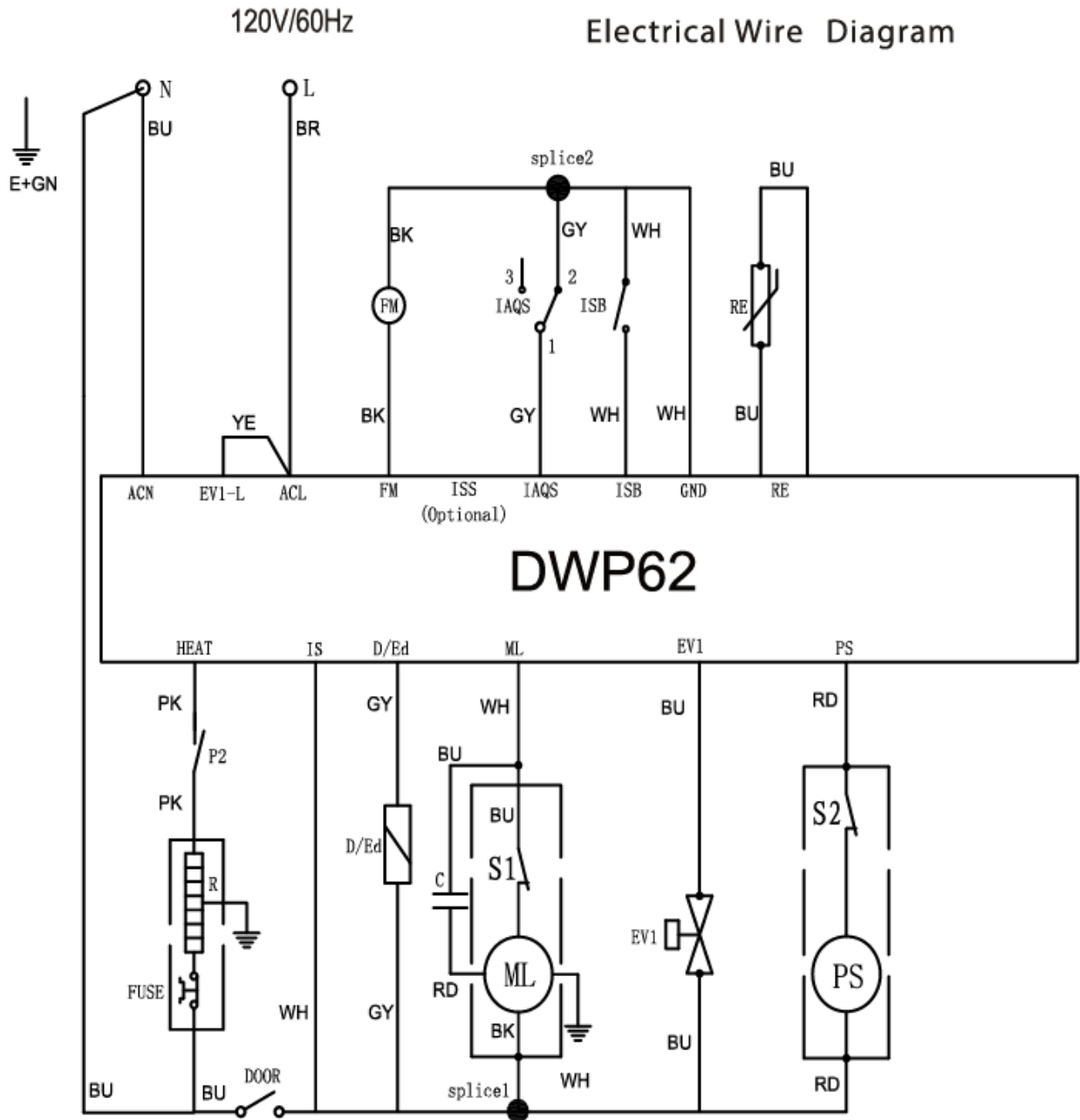
NO.	Description	Qty
419	Outlet Hose Clamp	1
420	Outlet Hose	1
421	Lower Flat Filter	1
422	Spray Arm	1
423	Right Base Plate Bracket	1
424	Connector Bracket	1
425	Crimp Connector	3
427	Main PCB box	1
429	Base Tray Cover	1



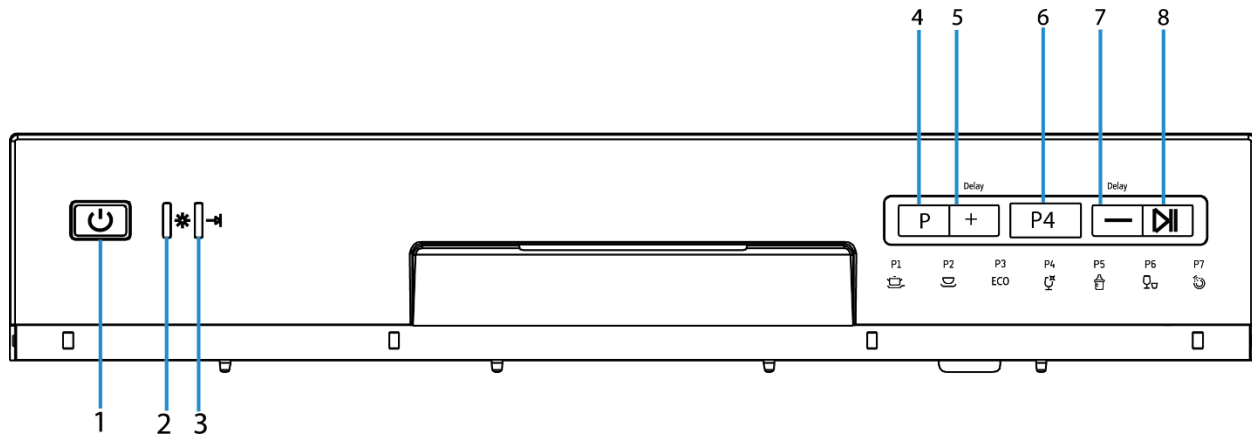
NO.	Description	Qty
501	Inlet Valve	1
502	Hose Clamp	3
503	Air Intake Inlet Hose	1
504	Power Cord	1
505	Power Cord Clasp	1
506	Drain Pump	1
508	Drain Hose	1
510	Hose Clamp	2
511	Inner Drain Pipe	1
512	Inner Drain Pipe Sealing Ring	1
513	Transfer Pipe Clamps	3
514	Pump Joint	1
516	Pump Transfer Pipe	1
517	Temperature Sensor	1
518	Wash Pump Motor Brackets	2
519	Wash Pump Motor	1

NO.	Description	Qty
520	Wash Pump Motor Case	1
521	Wash Pump Motor Sealing Gasket	1
522	Wash Pump Motor Sealing Ring	1
523	Wash Pump Motor Impeller	1
524	Impeller Screw	1
525	Dish Rack Assembly	1
530	Water Connection Components	
530a	Supply Hose	1
530b	Drain Hose	1
530c	Faucet Adaptor	1
531	Heating Elements	1
532	Drain Pump Inlet Pipe	1
533	Inlet Pipe Clamp	1
534	Drain Connector	1
535	Flatware Basket	1

# Wiring Diagram



# Control Panel



**Power Button:** Press to turn the dishwasher ON/OFF.

**Rinse Aid Warning Light:** Indicates when the rinse aid dispenser needs to be refilled.

**Wash Cycle Complete Light:** Indicates when the current wash cycle has ended.

**Program Selector:** Press to select your wash cycle. The wash cycles will display in sequence.

**Delay Button Increase:** Press to increase the time of the delay by one (1) hour increments up to 24 hours. This establishes how much time will elapse before the selected wash cycle will begin.

**Display Screen:** Shows the current dishwasher status (running or on delay) as well as the remaining run or delay time.

**Delay Button Decrease:** Press to decrease the time of the delay by one (1) hour increments down to 0.

**Start/Pause Button:** Press to start or pause the dishwasher wash cycle.

## Wash Cycles

The sequential order of the wash cycles is as follows.

1. Heavy
2. Normal
3. Light
4. Glass
5. Baby Care and Bottles
6. Speed
7. Rinse

# Detergent and Rinse Aid

## ***USE PROPER DETERGENT ONLY***

Use only detergent specifically made for use in dishwashers. Keep your detergent fresh and dry. Do not put powder detergent into the dispenser until you are ready to wash dishes.

The amount of detergent to use depends on whether your water is hard or soft. With hard water, you need extra detergent to alleviate the deposits that are left by the excessive minerals. Less detergent is needed for soft water.

To identify whether your water is hard or soft, contact your water department. A water softener is recommended for water that contains twelve or more grains. Without it, lime can build up in the water valve, which could stick while open and cause flooding. Too much detergent with soft water can cause a permanent cloudiness of glassware, called etching.

For heavily soiled loads, use the HEAVY (P1) wash cycle, fill one or both of the interior cups, depending on the hardness of your water, and also fill the open cup on the dispenser lid.

Use the information in the table below as a guideline to determine the amount of automatic dishwasher detergent to place in the dispenser:

<b>Number of Grains</b>	<b>Detergent Cup(s) to Fill</b>
Less than 4	15 cup
4 to 8	25 cup
8 to 12	15 and 25 cups
Greater than 12	15, 25 cups and the open cup

# Disassembly And Parts Replacement

## Basic Precautions

- Always turn off the electric power supply before servicing or replacing any electrical component.
- If grounding wires, screws, straps, clips, nuts, or washers used to complete a path to ground are removed for service, they must be returned to their original position and properly fastened.
- Make sure the power cord is not damaged.

**IMPORTANT: EMPTY CONTENTS OF UNIT AND DISCONNECT FROM POWER SOURCE BEFORE ATTEMPTING ANY REPAIRS.**

<b>⚠ WARNING</b>	
	<b>ELECTRICAL SHOCK HAZARD</b> Disconnect Electrical Power Before Beginning Removal of Parts

## Drain Pump Removal and Replacement

The drain pump functions to drain wash water after each cycle has been completed.

### Tools Needed:

- Phillips Screwdriver
- Flat Tip Screwdriver
- Needle Nose Pliers

### **Step 1: Remove Base Tray Cover**

- Turn the unit over to locate the Base Tray Cover

*Tip: Take a photo of the original assembly configuration for reference when reinstalling the panel.*

- Remove the screw that is circled in the photo below and set aside.

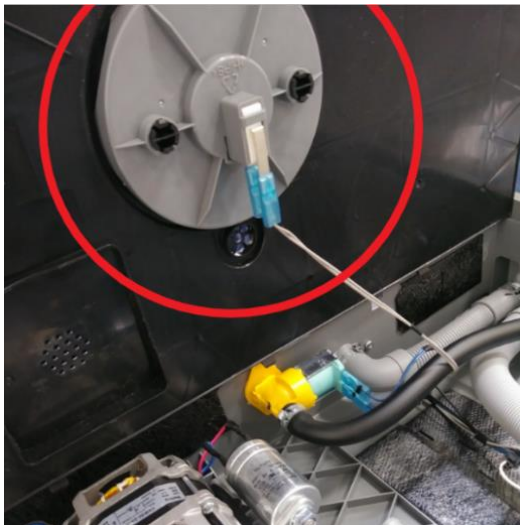


- Use a flat head screwdriver to release the nine (9) latches that secure the panel to the unit. While gripping the panel, lift upward as the latches are detached to more easily remove the panel.
- When latches are all released, remove the Base Tray Cover gently and be careful not to pull the overflow switch wiring.

*TIP: Use a pair of needle nose pliers to grab and lift up on the panel while releasing the latches.*



- Locate the float switch on the Base Tray Cover and disconnect the electrical connector.



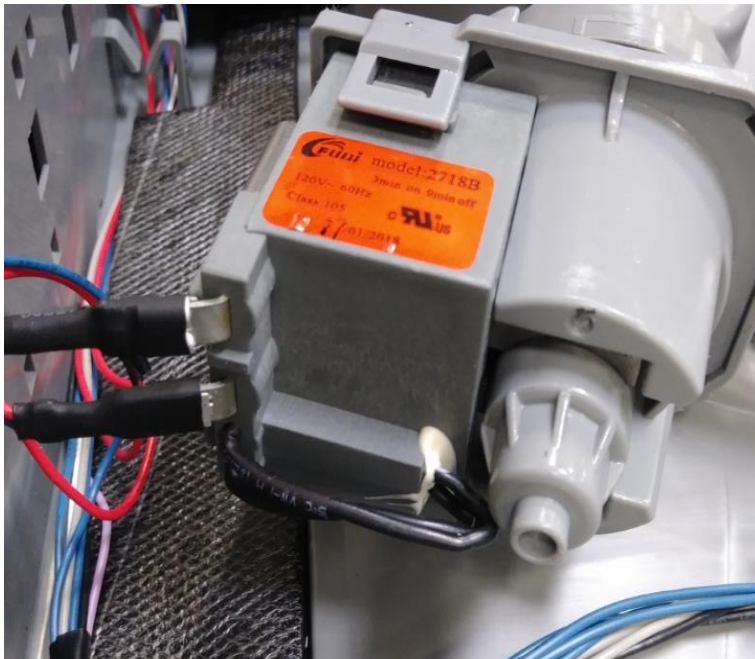


## Step 2: Remove the Drain Pump

- Locate the drain pump circled in the below image.



- Detach the electrical connectors from the pump.



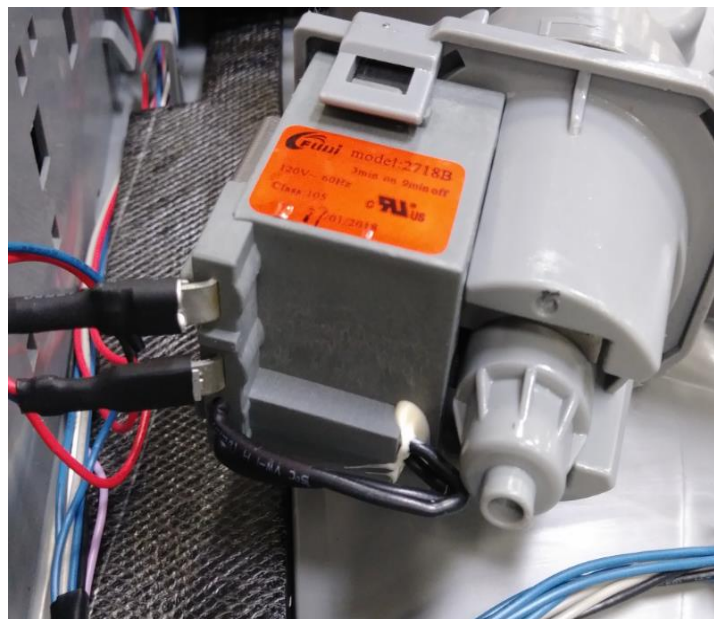


- Press the grey snap latch **FIRST** and then turn the drain pump counter clockwise to remove.
- Slide the pump out of the housing.



### Step 3: Install the new drain pump

- Slide the pump into the housing.
- Turn the pump clockwise until the locking latch clicks and the pump is locked in place.
- Reattach the electrical connectors (*Note: The drain pump is an A/C powered pump – wiring connections are interchangeable*).



#### Step 4: Reinstall the Base Tray Cover

- Locate the float switch on the Base Tray Cover and reattach the electrical connector.



- Push the Base Tray Cover into place securely latching the nine (9) snap latches.



- Reinstall the screw to secure the Base Tray Cover into place.



## Power Cord Removal and Replacement Instructions

The below instructions can be used to the replace the power cord on your EdgeStar DWP62 series countertop dishwasher.

### Tools and Parts Needed:

- Phillips Screwdriver
- Flat Tip Screwdriver
- Needle nose pliers

### **Step 1: Remove Base Tray Cover**

- *Refer to instructions to remove panel found in the "Drain Pump Removal and Replacement" section of this document*

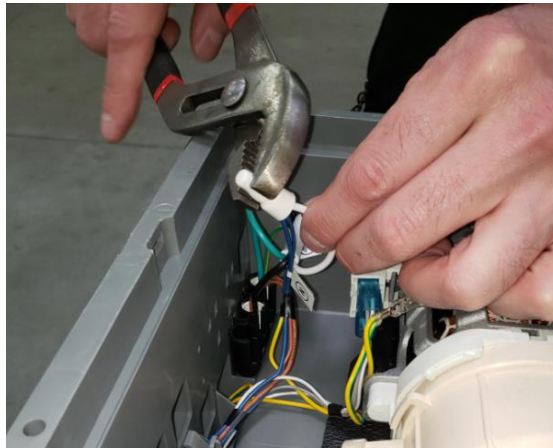
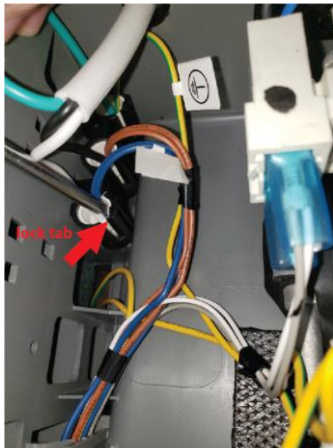
### **Step 2: Locate the Connector Bracket**



**NOTE:** *Take a photo to document color-coded wire connections prior to removing.*

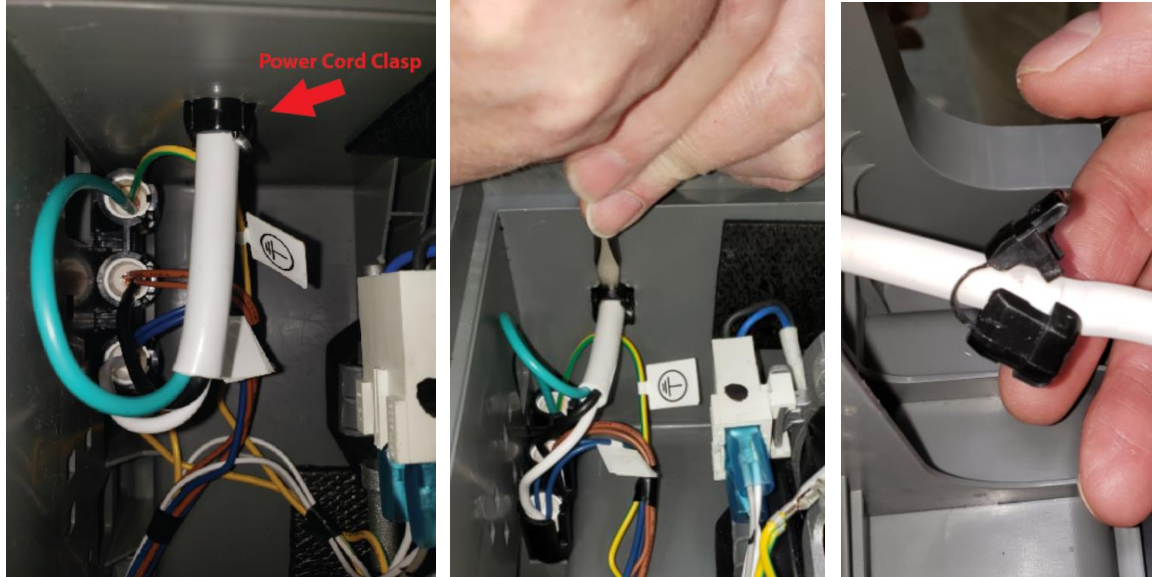
### **Step 3: Remove Crimp Connectors and Disconnect Power Cord Wiring**

- Remove three (3) Crimp Connectors that are seated into the Connector Bracket
- The Crimp connectors are seated into the connector bracket with a lock tab. Use a flat tip screwdriver if needed to release tab and remove crimp connectors from the bracket.
- Use pliers to un-crimp the wire inside of the crimp connector



#### Step 4: Remove Power Cord Clasp

- The Power Cord Clasp secures the power cord to the cabinet
- Use flat tip screwdriver to depress the locking tab while pressing outwards and/or pulling on the Clasp from the exterior of the unit.
- You may need to slightly twist the Clasp to assist in the removal process.



#### Step 4: Replace with new power cord

- Feed new power cord and clasp through power cord cabinet opening
- Press clasp into place and secure
- Refer to photo taken in Step 1 and re-secures wiring into wire crimp connectors
- Crimp connectors with needle nose pliers

#### Step 5: Reinstall the Base Tray Cover

- *Refer to instructions to reinstall Base Tray Cover found in the "Drain Pump Removal and Replacement" section of this document*



## Air Breaker Removal and Replacement Instructions

The air breaker functions to supply water for wash and rinse while preventing siphoning or back-flow of wash water into the water supply. It also functions to supply air venting to aid in dish drying.

### Tools and Parts Needed:

- Phillips Screwdriver
- Flat Tip Screwdriver
- Needle nose pliers
- Gear drive hose clamps (4)

### **Step 1: Remove Base Tray Cover**

- Refer to instructions to remove panel found in the "Drain Pump Removal and Replacement" section of this document

### **Step 2: Remove the Outer Shell**

- Remove the eight (8) screws as indicated in the below image. Set screws aside.

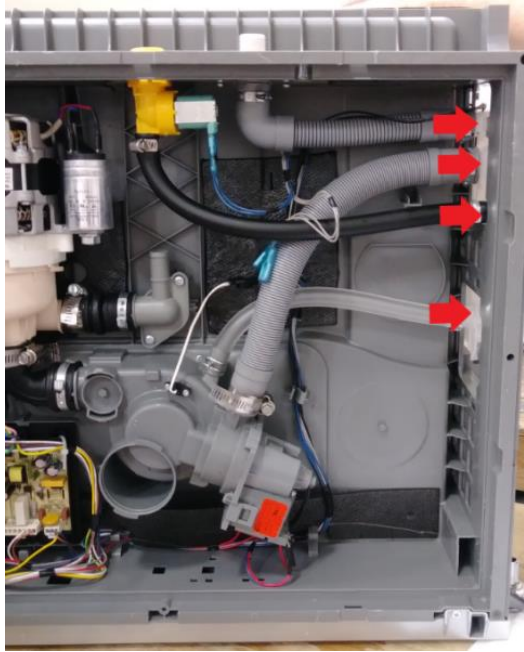


- Lift up on the outer shell and unlatch from the front of the unit. Set outer shell aside.



### Step 3: Remove Clamps

- From the bottom of the unit, locate the four hoses that go to the air breaker as indicated with the arrows in the below image.
- Use a flat tip screwdriver to pry the clips securing the ends of the clamp together.
- Remove clamp and discard.
- Remove the hoses from the air breaker.



#### IMPORTANT NOTE ON CRIMP CLAMPS

*The factory installed crimp clamps are not reusable. Gear drive hose clamps (not supplied) are required to complete repair.*

To remove, use a flat tip screwdriver to pry the clamp apart as noted in the below sample image.



### Step 4: Disconnect Electrical Connections

- Remove the electrical connector from the side of the Air Breaker where indicated in the image below



### Step 5: Remove Air Breaker Nut

- Locate the Air Breaker Nut located on the interior wall of the unit.
- Remove the Air Breaker Nut by turning counter-clockwise.



### Step 6: Remove / Replace Air Breaker Assembly

- Remove the Air Breaker Assembly by pulling the air breaker outward away from the dishwasher cabinet
- Inspect the Air Breaker Washer and clean or replace if needed
- Insert the replacement Air Breaker Assembly



Air Breaker Washer

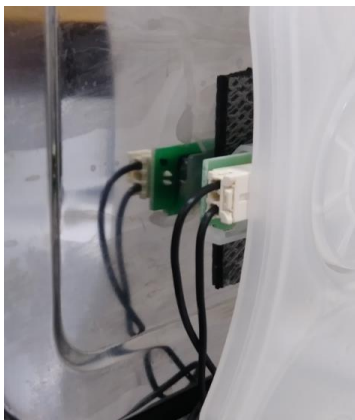
### Step 7: Screw the Air Breaker Nut back into place

- Screw the Air Breaker Nut back into place by turning the nut clockwise. This nut should be firmly tightened by hand.



### Step 8: Reconnect electrical connection

- Reattach the electrical connector back to the Air Breaker Assembly



### Step 9: Attach the gear drive hose clamps

- Slide the gear drive hose clamps over the ends of the four hoses
- Reattach the hoses
- Tighten the gear drive clamps



*Gear Drive Hose Clamp*



### Step 10: Reattach the Outer Shell

- Reattach the outer shell and the base tray cover
- Line up the latches of the outer shell and the upper back cover to reinstall



- Reinstall the 8 screws attaching the outer shell to the rest of the unit



### Step 11: Reinstall the Base Tray Cover

- Refer to instructions to reinstall Base Tray Cover found in the "Drain Pump Removal and Replacement" section of this document

## Baseboard Removal and Replacement

The baseboard is decorative cover plate located on the lower front of the unit, underneath the door. If damaged, the baseboard is easily replaceable.

### Tools Needed:

- Phillips Screwdriver
- Flat Tip Screwdriver



### Step 1: Remove the Baseboard

- Turn the unit upside-down
- Remove the two Phillips head screws that secure the baseboard to the bottom of the unit



- Unlatch the two snap latches with a flat tip screwdriver



*NOTE: After unlatching one side, lift up on the baseboard to keep it from falling back into the locked position*

- Lift the baseboard up towards you and pull away from the unit

## Step 2: Install the new Baseboard

- Line the 4 guides up into the slots making sure the wiring harness fits between the two guides in the center



- Slide the baseboard into the slots and slide the baseboard down into the snap latches.
- Install the two screws securing the baseboard to the bottom of the unit.



- Return unit to upright position.

## Check Valve Removal and Replacement

The check valve is a one way valve that prevents wastewater in the drain system from flowing back into the pump.

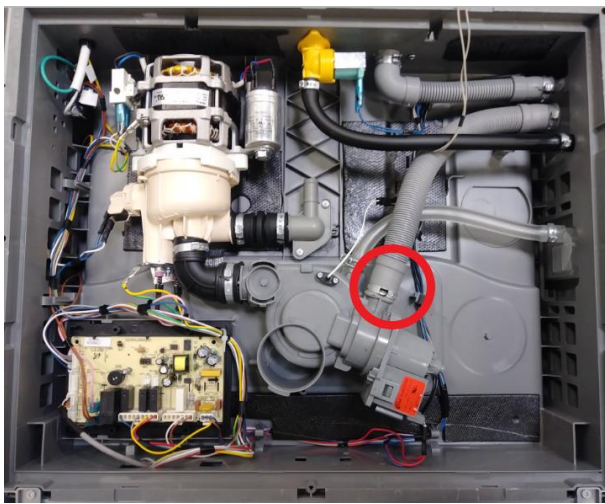
### Tools and Parts Needed:

- Phillips Screwdriver
- Flat Tip Screwdriver
- Needle nose pliers
- Gear drive hose clamp (1)

### Step 1: Remove Base Tray Cover

- Refer to instructions to remove panel found in the “Drain Pump Removal and Replacement” section of this document.

### Step 2: Remove the hose clamp on the drain pump

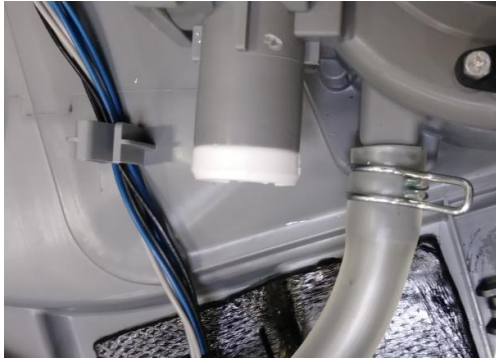


- Use a flat tip screwdriver to pry the clips securing the ends of the crimp clamp together.
- Remove clamp and discard. *The original crimp clamps are not reusable. Gear drive hose clamps (not supplied) are required to complete the repair.*

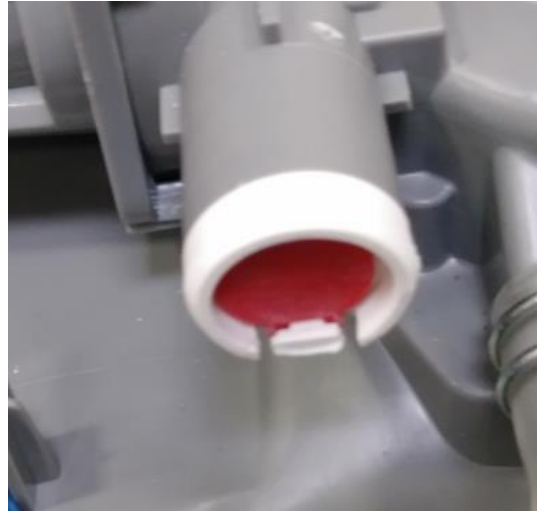
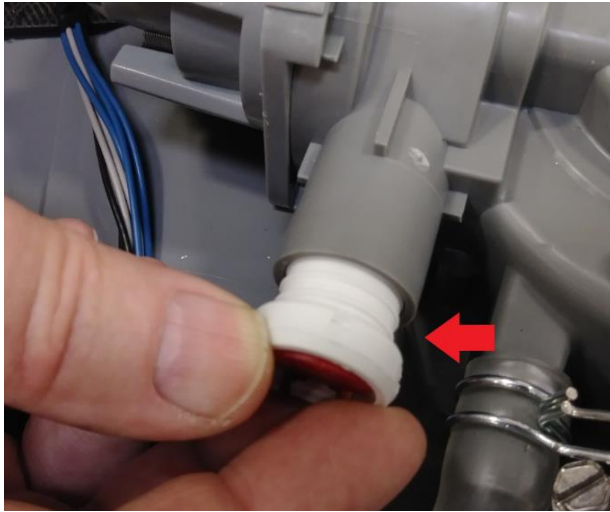




- Remove the end of the hose from the drain pump.



**Step 3: Remove and replace the check valve**

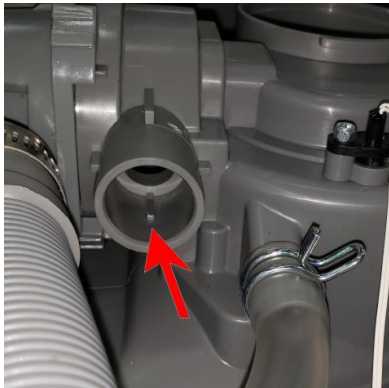


- Use needle nose pliers and gently pull the valve assembly out of the hose

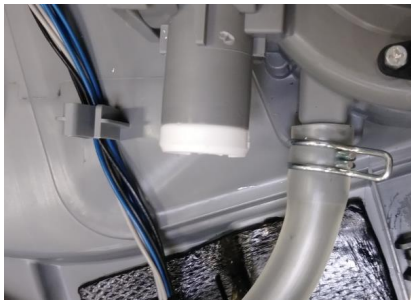


- Slide the new check valve assembly into place

*NOTE: The drain pump is keyed so the valve can only go in one way. It is easiest to start pushing it in and slowly spin it until it slides over the keyway.*

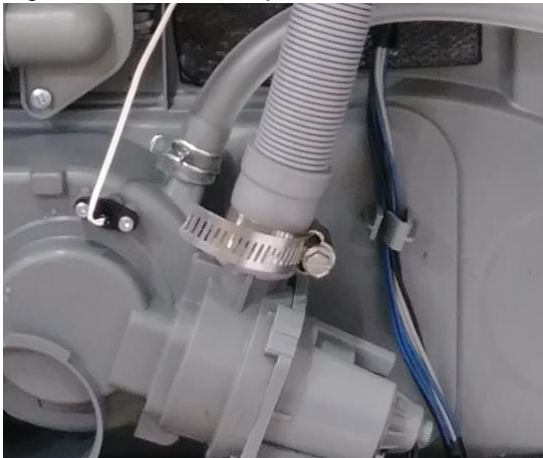


- Check to make sure the valve is fully seated into the drain pump.



#### **Step 4: Reinstall the drain hose**

- Slide a gear drive hose clamp over the end of the hose
- Slide the hose over the connection on the drain pump
- Tighten the hose clamp



*Gear Drive Hose Clamp*

#### **Step 5: Reinstall the Base Tray Cover**

- *Refer to instructions to reinstall Base Tray Cover found in the “Drain Pump Removal and Replacement” section of this document*

## Circuit Board Removal and Replacement

There are three (3) circuit boards found within the dishwasher. Two of these boards are for display and control panel functions and are referred to as 'Control Circuit Boards' or 'Display Circuit Boards'. Additionally, there is a 'Power Circuit Board' that manages the power distribution within the unit.

*Note: OEM Replacement board kits will include all 3 boards. All 3 boards should be replaced at the same time.*

### Tools and Parts Needed:

- Phillips Screwdriver                      - Flat Tip Screwdriver                      - Needle nose pliers

### **Control Circuit Boards (Display Circuit Boards):**

*NOTE: The control boards are located behind the Control Panel Cover. Make sure you do not close the door once the control panel cover is removed.*

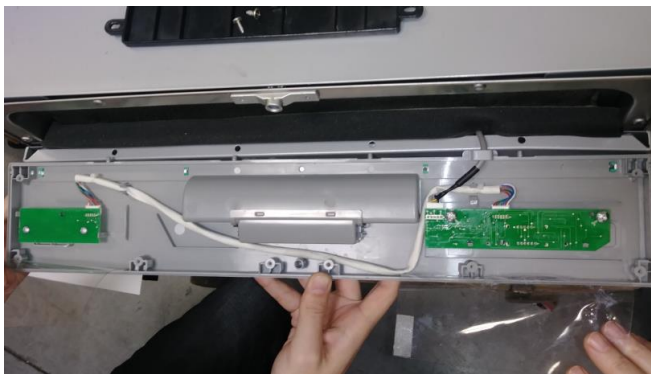
### **Step 1: Remove the Control Panel Cover**

- Open up the dishwasher and locate the 8 screws at the top of the inner door
- Use a Philips hand screwdriver to remove these 8 screws

*Tip: Hold the outside of the Control Panel Cover when removing the last screws so it does not fall. Do not pull on this panel. The circuit board wiring harness will still be attached.*

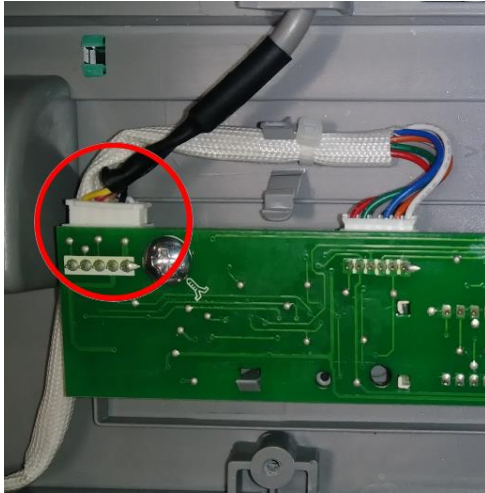


### **Step 2: Remove and Replace the control circuit boards**



*TIP: Take a photo of how the boards are placed and hooked up with the connectors for easy reinstall.*

- Remove the electrical connection from the unit to the circuit board. Do not disconnect the connectors for the harness that goes between the two boards.



- Remove the four screws holding the boards to the door



- Remove the control circuit boards and install the new boards in the same configuration
- Reinstall the four screws holding the boards to the door
- Reinstall the electrical connector for the wiring harness

### Step 3: Reassemble the Control Panel Cover

- Line the door panel up
- Install the 8 screws that secure the outer door panel to the inner panel





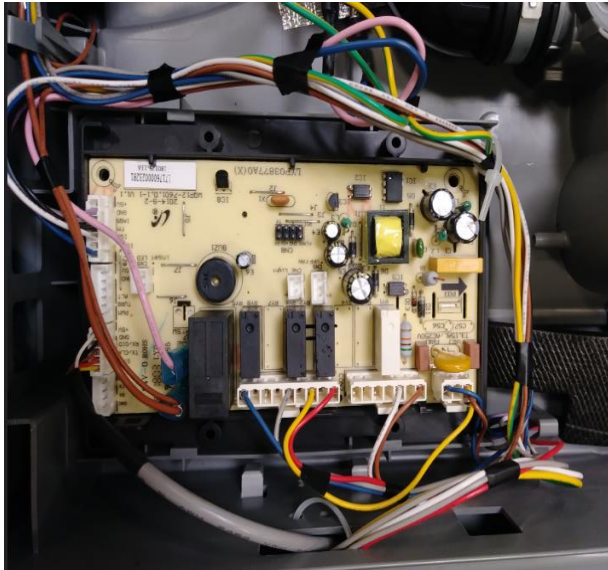
## **Power Circuit Board:**

### **Step 1: Remove Base Tray Cover**

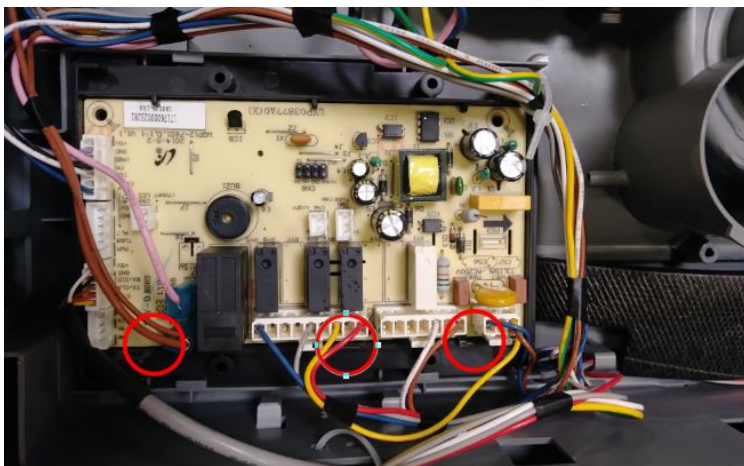
- *Refer to instructions to remove panel found in the “Drain Pump Removal and Replacement” section of this document*

### **Step 2: Remove and Replace Power Circuit Board**

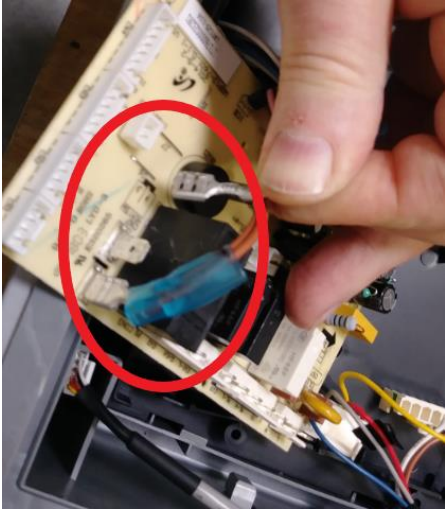
*Note: Make sure to take a picture of the wiring connections before unplugging them*



- Use a flat tip screwdriver and release the 3 latches securing the circuit board



- Detach the electrical connectors from the circuit board



- Remove the circuit board and secure the new board into place in the same configuration
- Reattach the electrical connectors.

### **Step 3: Reinstall the Base Tray Cover**

- *Refer to instructions to reinstall Base Tray Cover found in the “Drain Pump Removal and Replacement” section of this document*

## Float Assembly, Float Micro Switch and Float Removal and Replacement Instructions

Tools Needed:

- Phillips Screwdriver

- Flat Tip Screwdriver

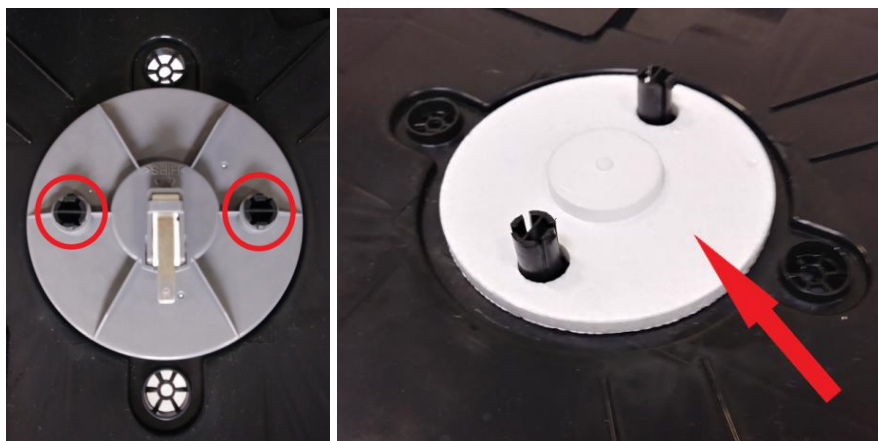
- Needle nose pliers

### Step 1: Remove Base Tray Cover

- Refer to instructions to remove panel found in the "Drain Pump Removal and Replacement" section of this document

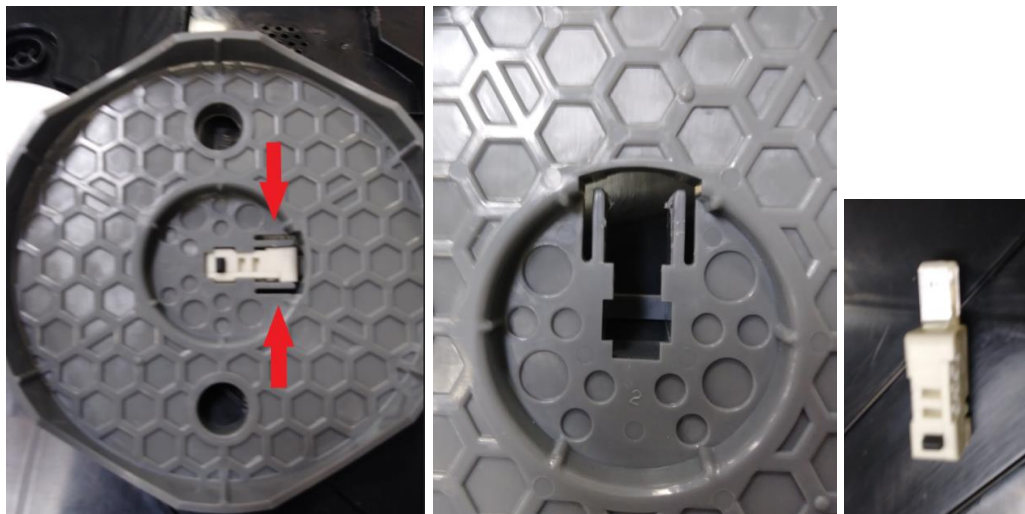
### Step 2: Remove the float assembly cover

- Pinch the two cylindrical latches and slide the cover up over the clips exposing the Styrofoam float



### Step 3: Remove and replace the micro switch

- Using needle nose pliers and push against the two grey latches to release the micro switch



- Slide the new micro switch into the latches in the same orientation

NOTE: If replacing the Styrofoam float itself, simply lift the float over the cylindrical latches and slide the new float into place

#### Step 4: Reinstall the float assembly cover

- Slide the float assembly cover over the cylindrical latches making sure the micro switch is in the same orientation as it was prior to removal



#### Step 5: Reinstall the Base Tray Cover

- *Refer to instructions to reinstall Base Tray Cover found in the “Drain Pump Removal and Replacement” section of this document*

## Heating Element Removal and Replacement

The heating element heats water as needed during wash and rinse cycle.

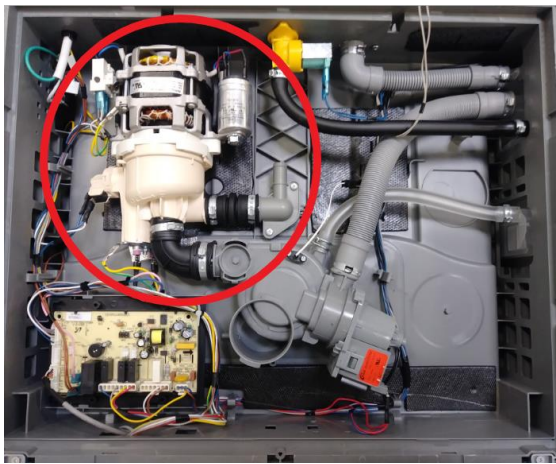
Tools Needed:

- Phillips Screwdriver
- Flat Tip Screwdriver
- Needle nose pliers
- 8mm socket wrench

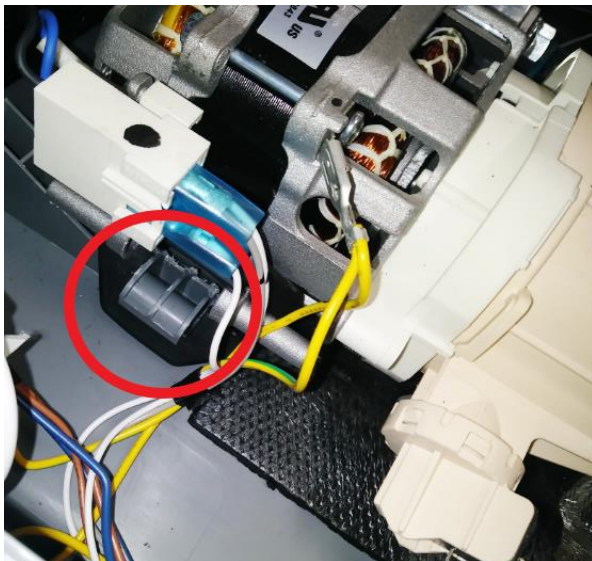
### Step 1: Remove Base Tray Cover

- Refer to instructions to remove panel found in the "Drain Pump Removal and Replacement" section of this document

### Step 2: Remove the wash pump assembly



- Unhook the rubber mounting straps for the motor assembly where indicated in the below images.
- Use a flathead screwdriver to slide the rubber hold-downs up and over the plastic latch assembly.



NOTE: Be careful not to tear the rubber



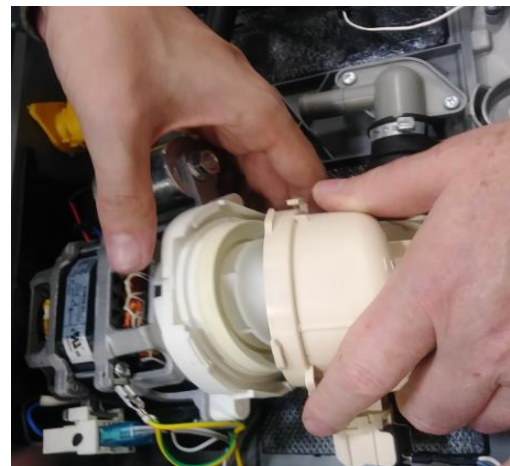
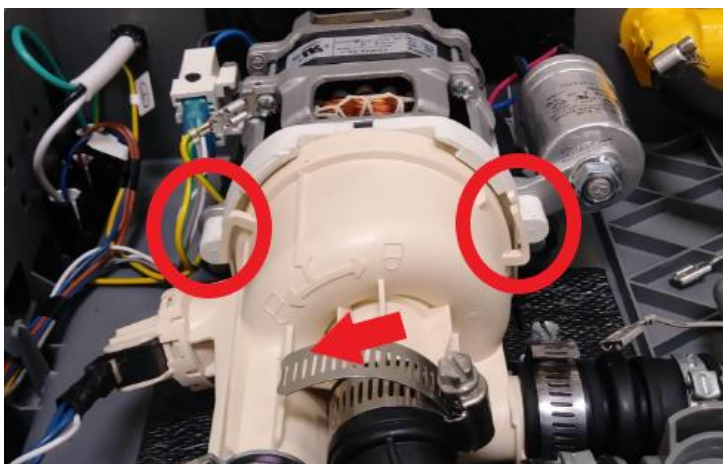
### Step 3: Disconnect the electrical connections for the heating element

- Take a picture of the 3 electrical connectors
- Using a flathead screwdriver, gently slide the 3 electrical connectors off of the heating element



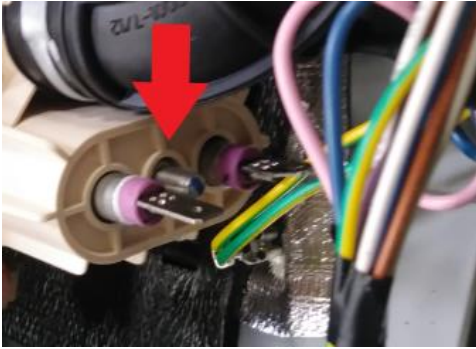
### Step 4: Separate the Heating Element assembly from the Wash Motor

- Press in on both snap latches and turn the heating element housing counter clockwise



### Step 5: Remove and replace the Heating Element

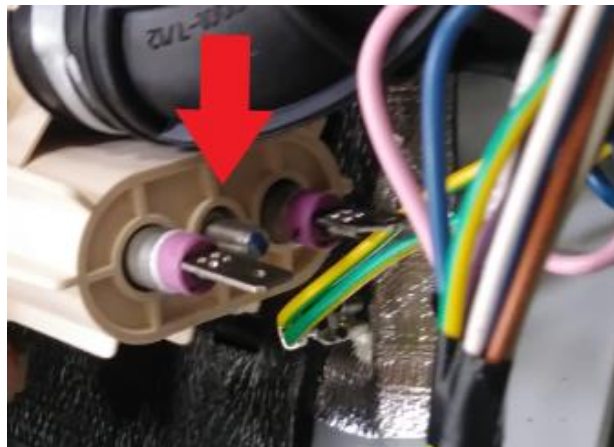
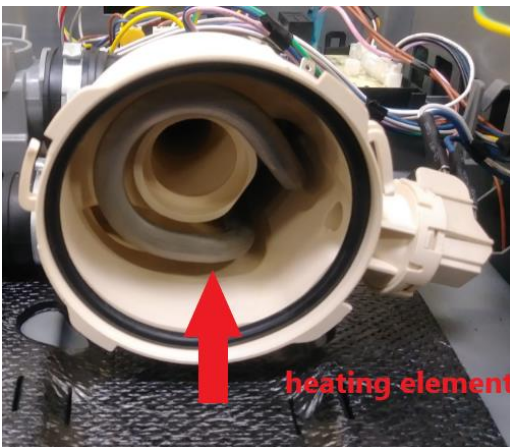
- Use an 8mm socket to remove the nut on the heating element



- Slide the heating element out of the housing

*NOTE: The replacement heating element will come with a new housing. If you have not damaged the original housing, it is easier to remove and replace just the element.*

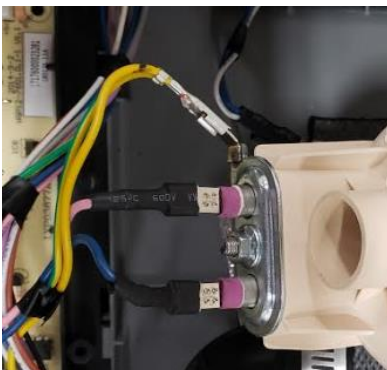
- Slide the new heating element into place
- Use an 8mm socket to install the securing nut



### Step 6: Reconnect the electrical connections

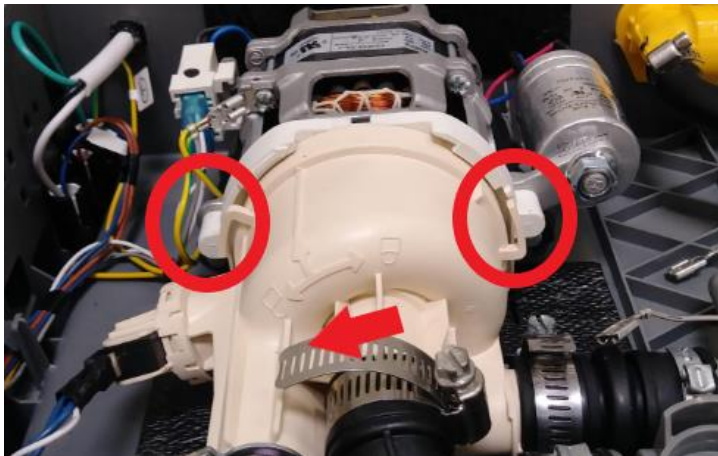
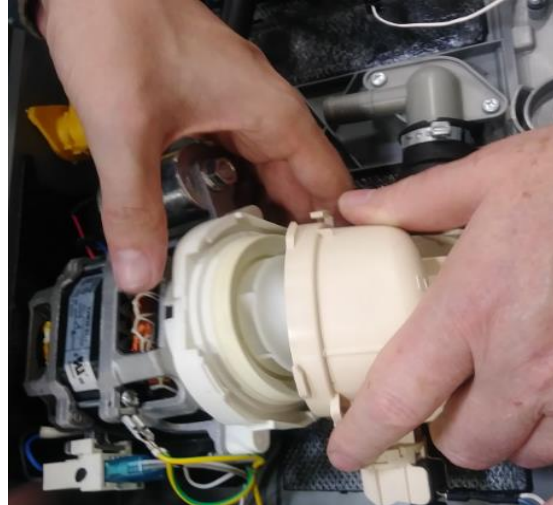
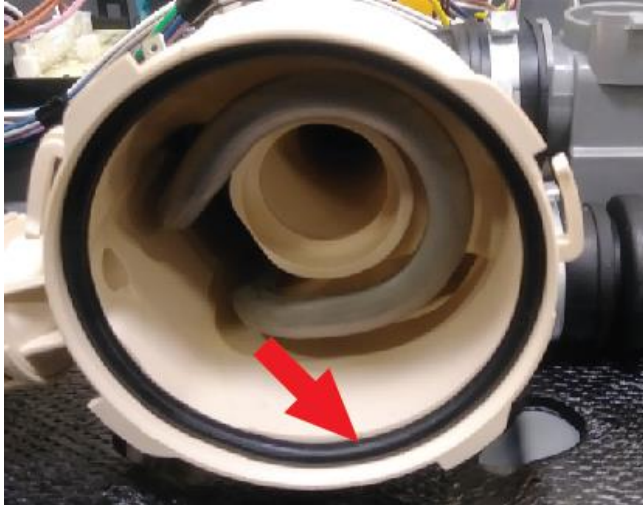
- Reinstall the electrical connectors on the back of the heating element

**VERY IMPORTANT:** Refer back to the pictures taken in step 4 to properly reconnect the electrical connections in the original order.



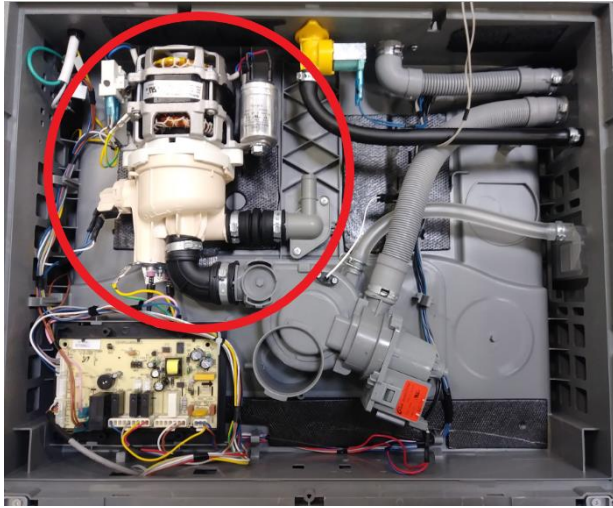
### Step 7: Reconnect the Heating Element Assembly to the Wash Motor

- Ensure the O-ring gasket is in place
- Push the heating element housing against the wash motor and turn the housing clockwise until the snap latches lock into place.



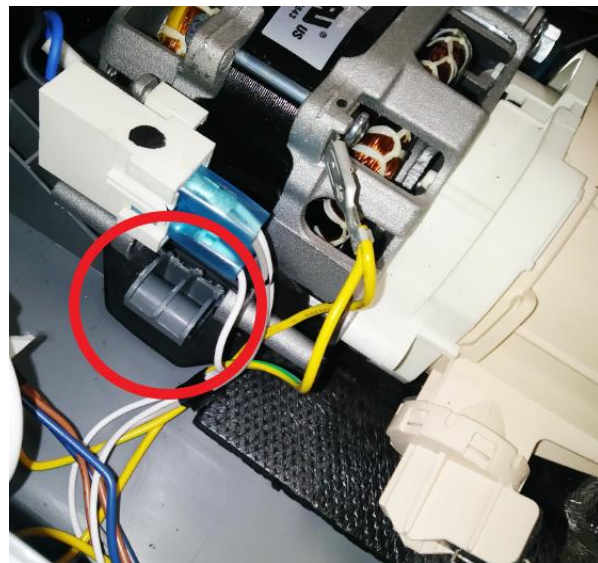


### Step 8: Reinstall the Wash Pump Assembly



- Seat the wash motor back into place.
- Using a flathead screwdriver, slide both of the rubber hold-downs over the latch assembly.

*NOTE: Be careful not to tear the rubber.*



### Step 9: Reinstall the Base Tray Cover

- *Refer to instructions to reinstall Base Tray Cover found in the “Drain Pump Removal and Replacement” section of this document*

## Inlet Valve Removal and Replacement

The inlet valve controls the inflow of water into the dishwasher. The valve opens and closes to allow water into the unit based on signals from the control board.

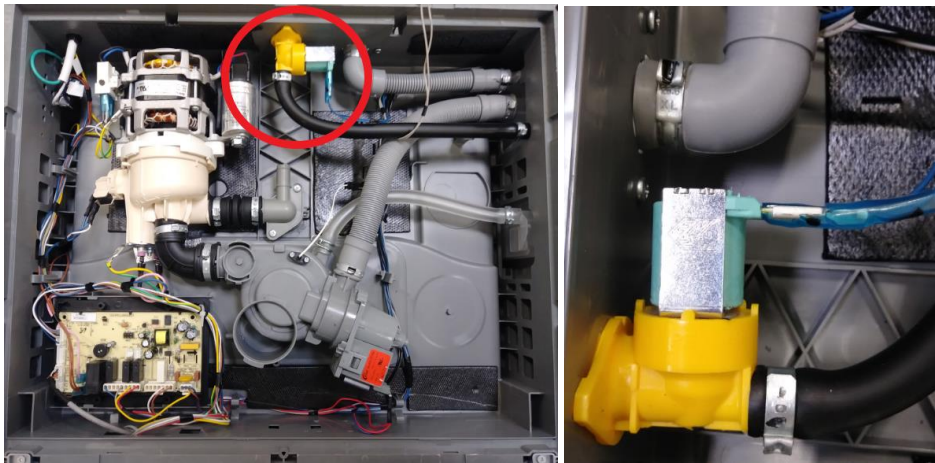
Tools Needed:

- Phillips Screwdriver
- Flat Tip Screwdriver
- Needle nose pliers
- Gear drive hose clamp (1)

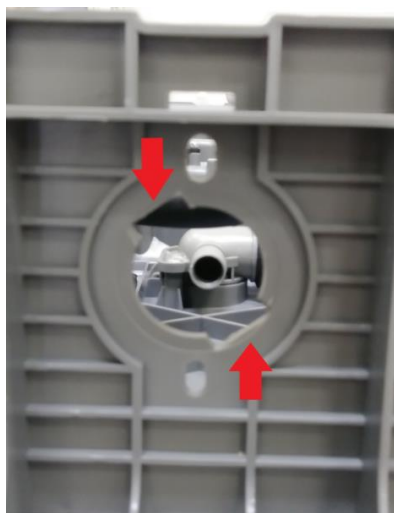
### Step 1: Remove Base Tray Cover

- Refer to instructions to remove panel found in the "Drain Pump Removal and Replacement" section of this document

### Step 2: Remove and replace the inlet valve assembly



- Remove the electrical connectors from the inlet valve and place to the side.
- Use a flat tip screwdriver to pry the clips securing the ends of the hose clamp together. Remove and discard clamp.
- From the outside of the unit, push the yellow snap latch towards the inside of the unit, turn and line up with the latches to remove.



- Install the new inlet valve in the same orientation you removed it from
- Turn the valve to line up with the latches, and the snap latch will re-engage.
- Slide the gear drive clamp over the hose



- Slide the hose back over the inlet valve and tighten the clamp
- Reinstall the electrical connections on the inlet valve



### **Step 3: Reinstall the Base Tray Cover**

- *Refer to instructions to reinstall Base Tray Cover found in the “Drain Pump Removal and Replacement” section of this document*

# Door Component Replacement Removal and Replacement

## Inner Door, Outer Door Panel, Control Panel Cover, and Soap Dispenser

Tools Needed:

- Phillips Screwdriver

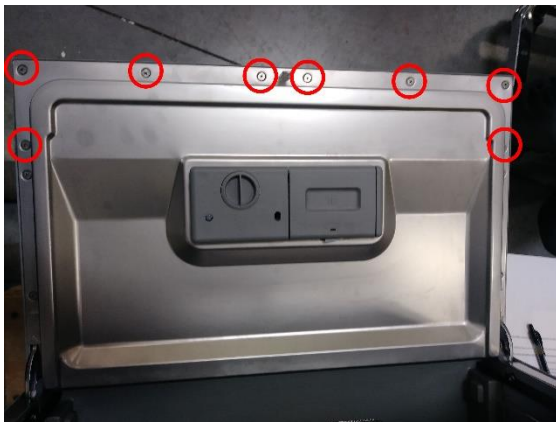
- Flat Tip Screwdriver

- Needle nose pliers

### Step 1: Remove the Control Panel Cover



- Remove the 8 top Philips head screws on the inner door
- The door latch is loose at this point and can be set aside.



- Disconnect the electrical connector for the control circuit boards



NOTE: If replacing the Control Panel Cover you will need to remove the screws securing the control circuit boards to the panel.



## Step 2: Remove Outer Door Panel



- Remove the four lower Philips head screws from the inside of the door



*NOTE: Hold the outside panel so it does not fall when removing the final screws*

- Slide the panel down off of the alignment pins and pull the panel away from the door





### Step 3: Remove the Soap Dispenser

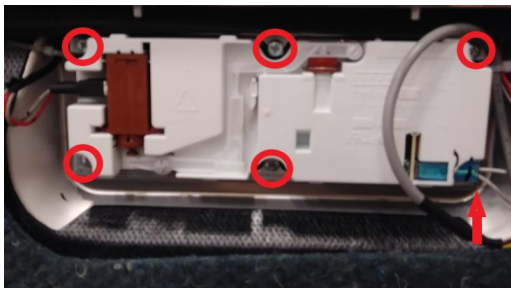
NOTE: This is a good time to take some pictures of the electrical connectors so you may refer back to them during reassembly

- Use needle nose pliers or a flat tip screwdriver to remove the electrical connectors from the soap dispenser

NOTE: One of the locking electrical connectors may not be accessible with the dispenser installed. You may have to remove the brackets and push the dispenser partially through the inner door to get access to the backside of the connector.



- Remove the 6 screws holding the two brackets that attach the soap dispenser to the door



NOTE: The lower screws also attach a bracket that attaches to the bottom of the soap dispenser

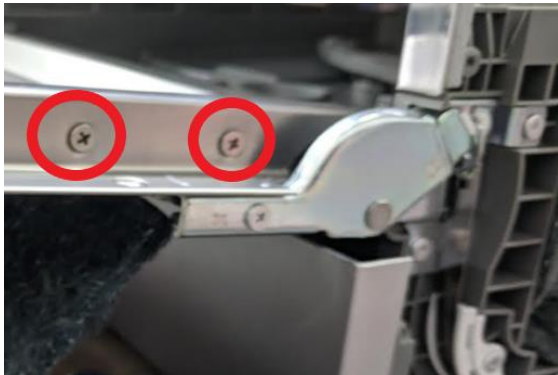




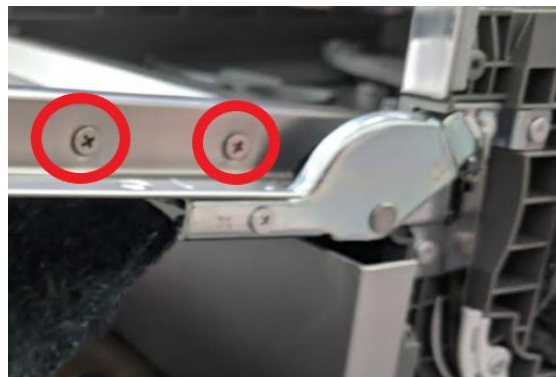
- Remove the soap dispenser by carefully pushing the part through the front of the door

#### Step 4: Remove and replace the Inner Door Panel

- Remove the two Philips head screws on each side of the door



- With the door is in the almost closed position, lift up on the inner door detaching it from the frame of the unit

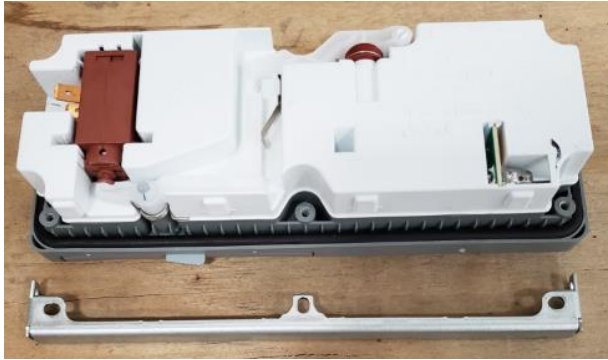


- Slide the inner door back into place
- Attach the two screws on each side of the door

### Step 5: Reinstall the soap dispenser

- Slide the soap dispenser into place in the same orientation you removed it from
- Tighten the six Philips head screws that secure the soap dispenser to the door

NOTE: It is easiest to start the top three screws to hold the soap drawer then line up the lower bracket and install those screws. Once all of the screws are started, you can go back and tighten them



- Reinstall the electrical connectors on the soap dispenser.



NOTE: Refer back to your photo taken earlier to put the connectors back in the right location

## Step 6: Reinstall the Outer Door Panel



- Line up the alignment pins with the holes on the door and slide the door up into place



- Start all four Philips head screws a few threads



- Once all four screws are started, tighten them with a Philips screwdriver

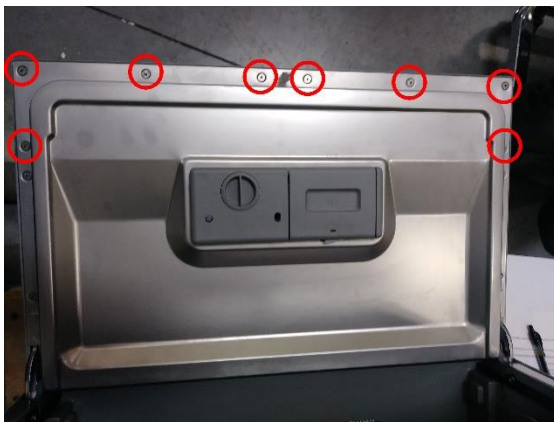
## Step 7: Reinstall the Control Panel Cover



- Reposition the door latch through the inner door
- Line the control panel cover up with the alignment pins



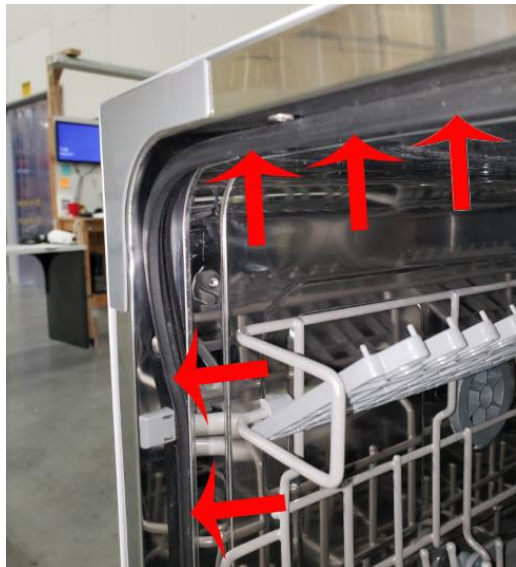
- Reattach the electrical connector to the control circuit boards
- Start the 8 Philips head screws a few threads each
- Once all of the screws are started, tighten the screws



## Door Gasket Removal and Replacement Instructions

The door gasket provides a water tight seal between the dishwasher door and cabinet. Inspect the door gasket periodically and replace when gasket appears excessively worn or damaged.

### Step 1: Remove Door Gasket



- Pinch the door gasket with your fingers and gently pull it away from the unit to remove.

### Step 2: Install new Door Gasket



- Install the grooved side of the gasket into the channel. Press the gasket firmly to install around the door frame.
- After gasket installed, ensure that each end is evenly extended on each side at bottom. Re-install gasket as needed.



## Door Switch Removal and Replacement Instructions

The door switch signals to the circuit board that the door is closed properly and the unit can begin a cycle. A failing switch may lead to an error code, failure to turn on, or it may even allow the unit to run without the door closed properly.

Tools Needed:

- Phillips Screwdriver

- Flat Tip Screwdriver

- Needle nose pliers

### Step 1: Remove the Outer Shell

- Remove the eight (8) screws as indicated in the below image. Set screws aside

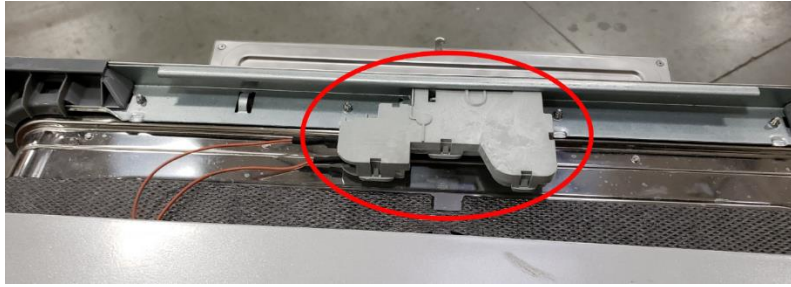


- Lift up on the outer shell and unlatch from the front of the unit. Set outer shell aside





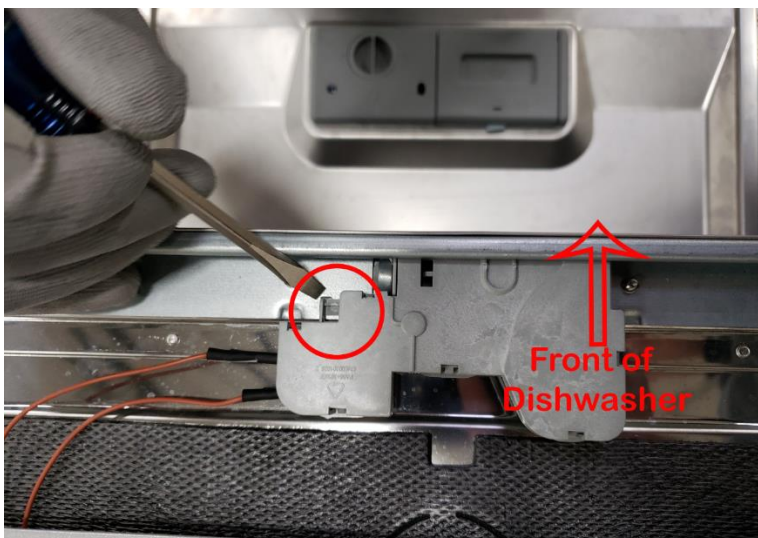
## Step 2: Remove and replace the door switch assembly



- Disconnect the two wires from the switch



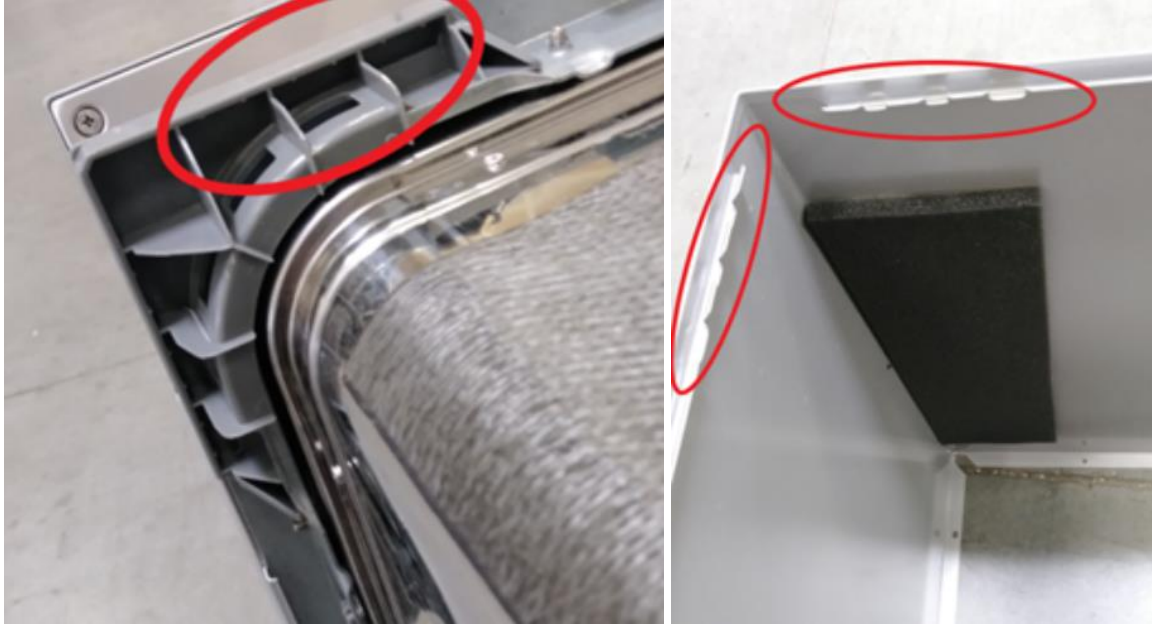
- Release the snap latch for the switch



- Slide the switch assembly away from the snap latch
- Place the new switch assembly in place and slide towards the snap latch until it clicks
- Reinstall the two electrical connectors on the switch

### Step 3: Reattach the Outer Shell

- Reattach the outer shell and the base tray cover
- Line up the latches of the outer shell and the upper back cover to reinstall



- Reinstall the 8 screws attaching the outer shell to the rest of the unit



# Troubleshooting

SYMPTOM	CHECK FOR THE FOLLOWING	REMEDY
<b>E1 Error Code</b> Dishwasher will not fill with water or will not fill properly	The water supply is turned off	Turn the water supply on
	Defective water inlet valve	Replace the inlet valve
	Low water pressure	Minimum water pressure of 20 PSI
	Obstructed water inlet valve or hose	Disassemble and clean the water inlet valve and hose
	Defective air breaker	Replace the air breaker
	Heavy water usage elsewhere in home	Use dishwasher when water usage is at a minimum
	Defective PCB assembly	Replace the PCB assembly
Dishwasher will not drain	Defective drain pump	Replace the drain pump
	Obstructed drain hose	Check the drain hose
	Defective PCB assembly	Replace the PCB assembly
<b>E3 Error Code</b> Dishwasher runs but will not heat	Possible low input voltage	Ensure power requirements / power supply in "Specifications" section
	Defective temperature sensor	Replace the temperature sensor
	Defective heating element	Replace the heating element
<b>E4 Error Code</b> Overfill alarm	Defective PCB assembly	Replace the PCB assembly
	Defective micro-switch for float	Replace the micro-switch
	Water leaks from dishwasher	See "Water leaks from dishwasher"
Does not operate when Start button pressed	The door not close properly	Confirm door closed properly
	Defective door switch contacts	Replace the door switch
	Defective door latch	Replace the door latch
	Defective PCB assembly	Replace the PCB assembly
Too little water fill	Dishwasher not level	Level the dishwasher
	Defective air breaker	Replace the air breaker
	Water siphons out	Clean or Replace the Air Breaker
Dishwasher runs with door open	Defective door switch contacts	Replace the door switch
	Defective door latch	Replace the door latch
	Defective PCB assembly	Replace the PCB assembly
Motor will not start or run	Defective motor bearings	Replace the motor
	Defective motor capacitor	Replace the motor capacitor
	Improper motor voltage	Replace the motor
	Motor windings shorted	Replace the motor
	Defective motor capacitor	Replace the motor capacitor
Cycles repeat in error	Defective PCB assembly	Replace the PCB assembly

<b>SYMPTOM</b>	<b>CHECK FOR THE FOLLOWING</b>	<b>REMEDY</b>
Water remains in bottom	Obstructed drain hose	Clean out drain hose
	A small amount of water (in sump area) is normal	This is necessary to keep the pump primed and is drained automatically at the beginning of each cycle
	Defective drain pump	Replace the Drain pump
	Defective Check valve	Clean or Replace the Check valve
	Defective One way valve	Clean for debris in Air Breaker
Spotting or filming on glasses	Detergent allowed to stand too long in the dispenser or excessive amounts of detergent are being used	Instruct the customer on proper use of dishwasher detergent Refer to the owner's manual
	Improper loading of dishes, pots, pans, and nesting of silverware	
Noisy pump assembly	Debris in bottom of tub sump area	Clean out the sump area
	Pump parts were not properly installed	Inspect the pump and correct and installation errors
Poor washability	Clogged filter assembly	Clean the filter assembly
	Dishware blocking the spray arm	Adjust dishes and rotate spray arm before wash
	Improper loading of dishes, pots, pans, and nesting of silverware	Refer to the owner's manual
	Detergent issue	
	Select improper program	
	Defective soap dispenser	Replace the soap dispenser
	Defective spray arm	Check spray arm for proper rotation and cleanliness
	Too little water fill	See "Too little water fill" symptom
Defective wash pump	Replace the wash pump	
Poor drying of dishes	Improper loading of dishes, pots, pans, and nesting of silverware	Instruct the customer on proper loading of the dishwasher Refer to the owner's manual
	Improper program / cycle selection	
	Defective soap dispenser	Replace the soap dispenser
Water leaks from dishwasher	Too much water fill	Replace air breaker or PCB assembly
	Defective w pump	Replace the drain pump
	Dishwasher not level	Level the dishwasher
	Soap suds leak from dishwasher	Refer to use and care manual
	Loose hose clamps	Tighten or replace hose clamps
	Drain pump assembly not seated properly with sump	Remount the drain pump assembly
	Defective door seal	Replace the door seal

DATE	REVISION NOTES
03/22/2018	INITIAL DOCUMENT
04/24/2018	MINOR TEXT EDIT