

## KC3000 Series Power Circuit Board Replacement

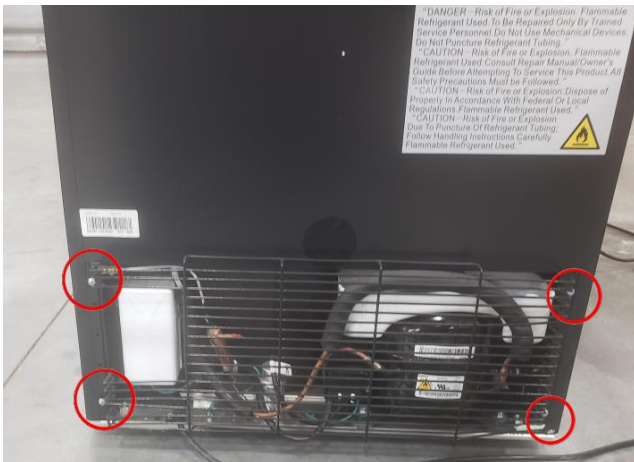
### Tools Required:

- Phillips Screwdriver
- Flathead Screwdriver
- Needle Nose Pliers

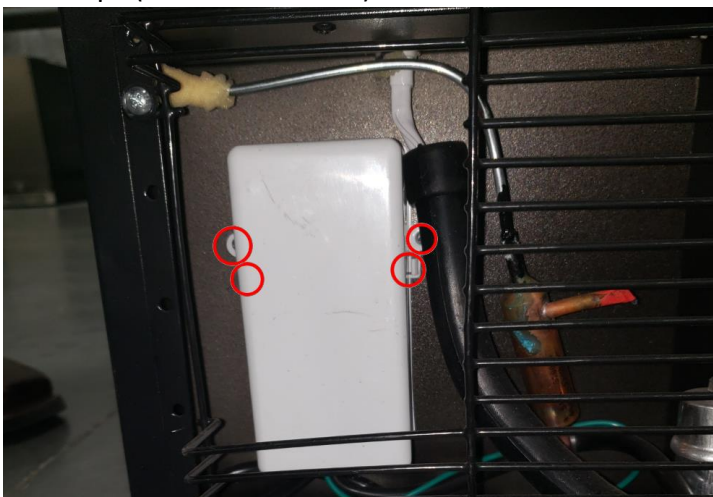
**NOTE:** Disconnect the unit from the power source before attempting any repairs

### Step 1: Remove the power circuit board cover

- On the back of the unit, remove the 4 Phillips screws securing the grated cover over the back of the



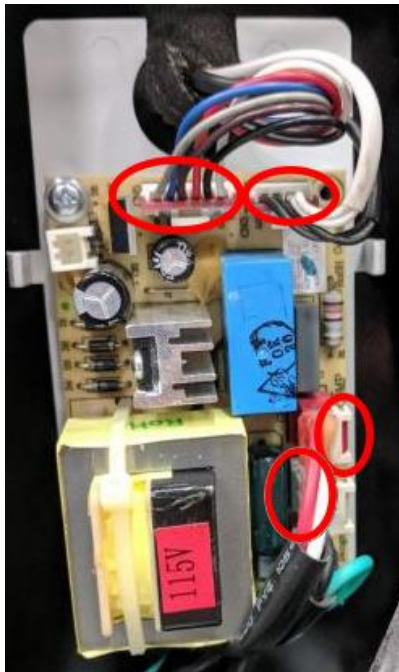
- Remove the cover to the circuit board by removing the two Phillips head screws and pressing in the two squeeze clips (one on each side)



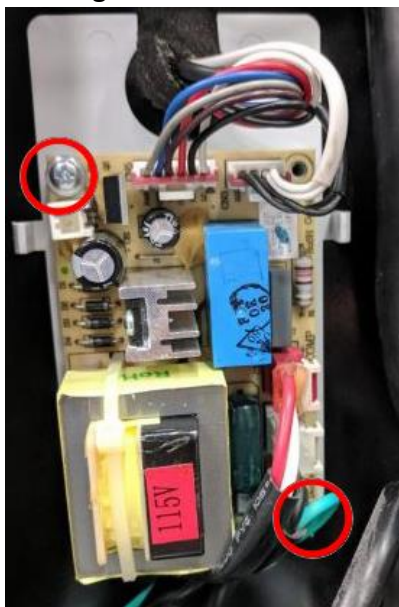
## Step 2: Remove and replace the power circuit board

**NOTE: This would be a good time to take a picture of the electrical connections to help put them back in the right place later**

- Using needle nose pliers or a flathead screwdriver, release the squeeze clips for the electrical connectors



- After all of the electrical connectors are removed, remove the Phillips screw holding the board in the housing



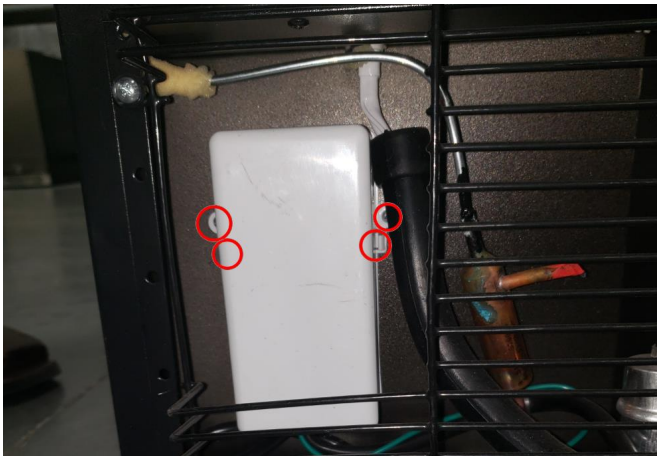
- Line the new circuit board up and install the two Phillips screws securing it to the housing
- Reinstall the electrical connectors

### Step 3: Reinstall the circuit board cover

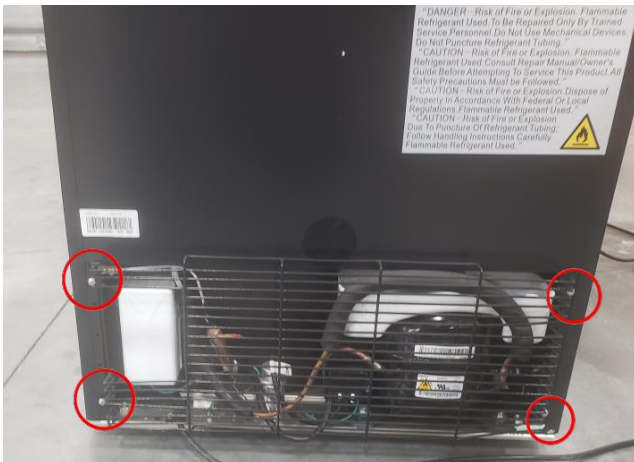
- Clip the circuit board cover to the housing

**NOTE:** There are cutouts for the wires to feed through. The wires must be properly fed through these cutouts to allow the cover to properly clip to the housing

- Once the cover is secured to the housing, install the two Phillips screws to attach the housing to the unit



- Reinstall the grated cover over the back of the unit



**Procedure Complete!**