

TWR181ES Control Board Replacement

NOTE: Empty contents of unit and disconnect from power source before attempting any repairs.

Tools Needed

- Butter Knife
- Phillips Screwdriver



STEP 1: Remove the control panel assembly

- With a butter knife or a thin plastic pry tool, remove the two decorative covers that cover the control panel screws by prying behind them



NOTE: Be careful not to scratch the panel

- Remove the Philips screws from control panel



- Remove the control panel from the unit.

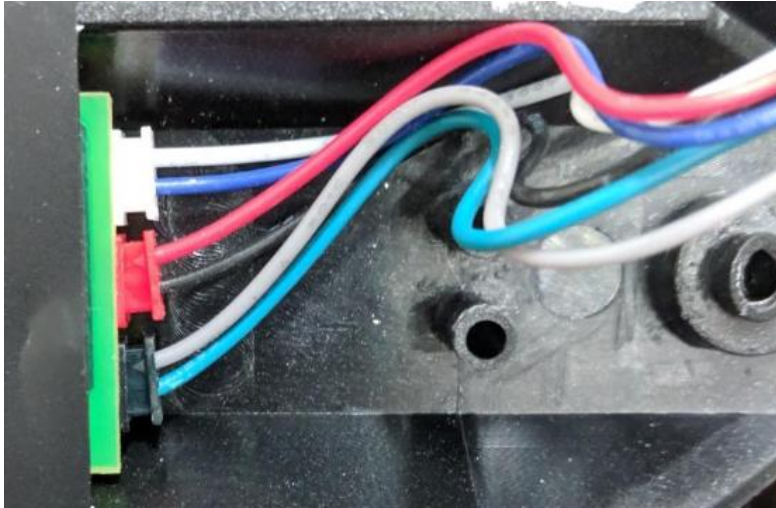


Step 2: Remove and replace the control board assembly

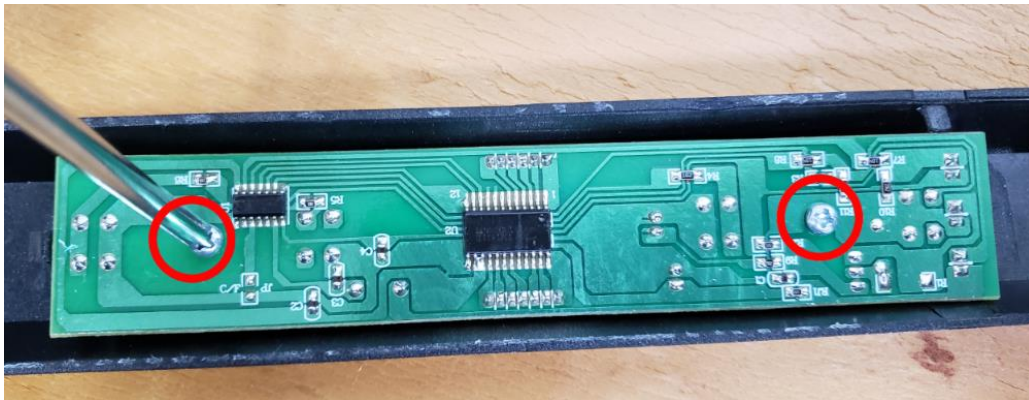
- Peel the black tape off of the back of the control panel to expose the circuit board



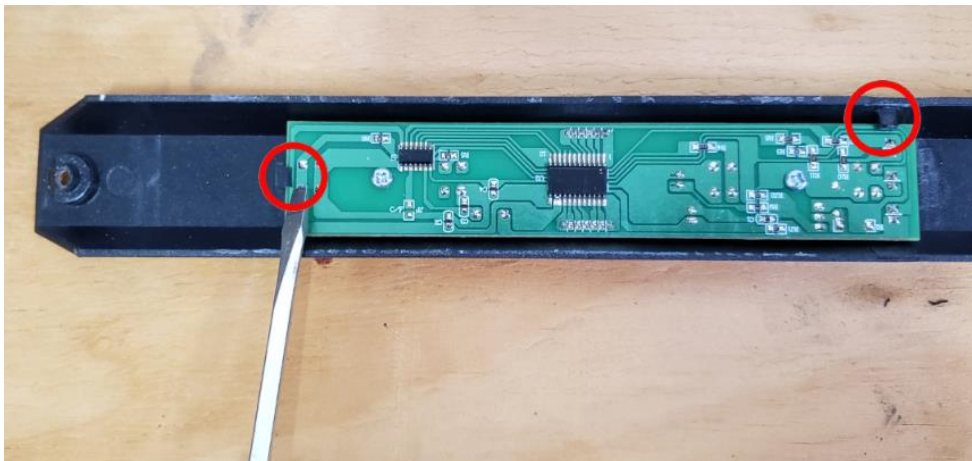
- Remove the three electrical connectors from the circuit board



- Remove the Phillips screws securing the control board to the housing

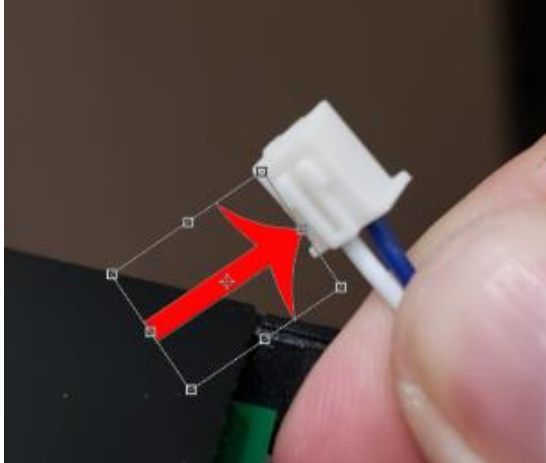


- Slide the new board under the clips and reinstall the two Phillips screws



Step 3: Reinstall the control panel assembly

- Reconnect the three electrical connectors – The clip side of the connector goes on the panel side



- Reinstall the black plastic tape cover over the circuit board



- Reinstall the panel to the door by carefully feeding the wiring into the door



- Reinstall the two Phillips screws securing the panel to the door



- Reinstall the two decorative plugs over the screws



Procedure Completed!