

AVALLON Kickplate Replacement



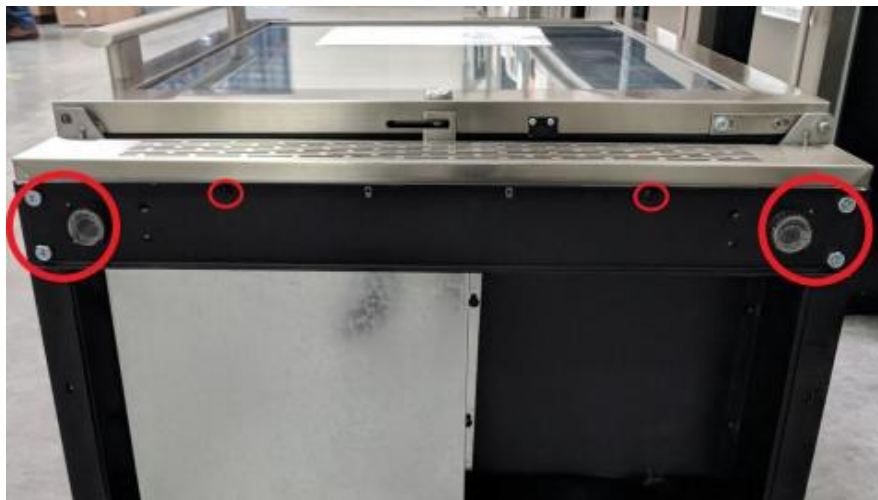
Tools Needed

- Phillips Screwdriver
- 12 MM Socket Driver or 12 MM Socket and a ratchet

NOTE: Empty contents of unit and disconnect from power source before attempting any repairs.

Step 1: Remove the front cabinet bracket

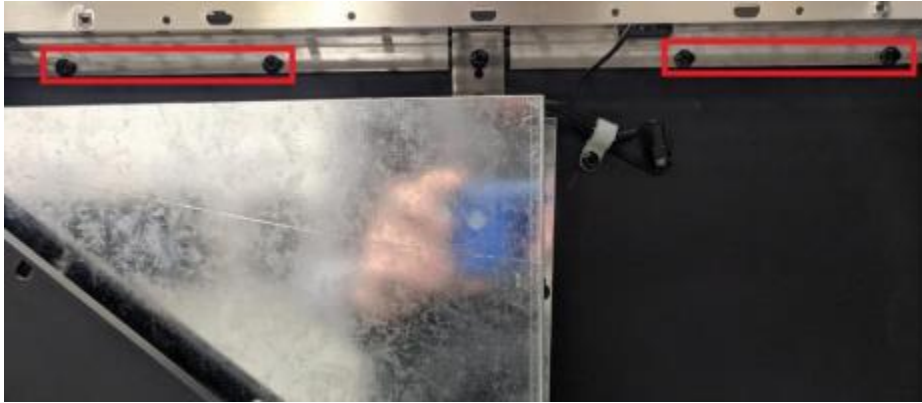
- Lay the unit on its back
- With a Phillips screwdriver, remove 5 of the 6 screws securing the cabinet bracket to the cabinet
- Loosen the sixth screw and swing the bracket out of the way.



NOTE: If the 4 main silver screws are hard to remove with a screwdriver, a 12 MM socket can be used

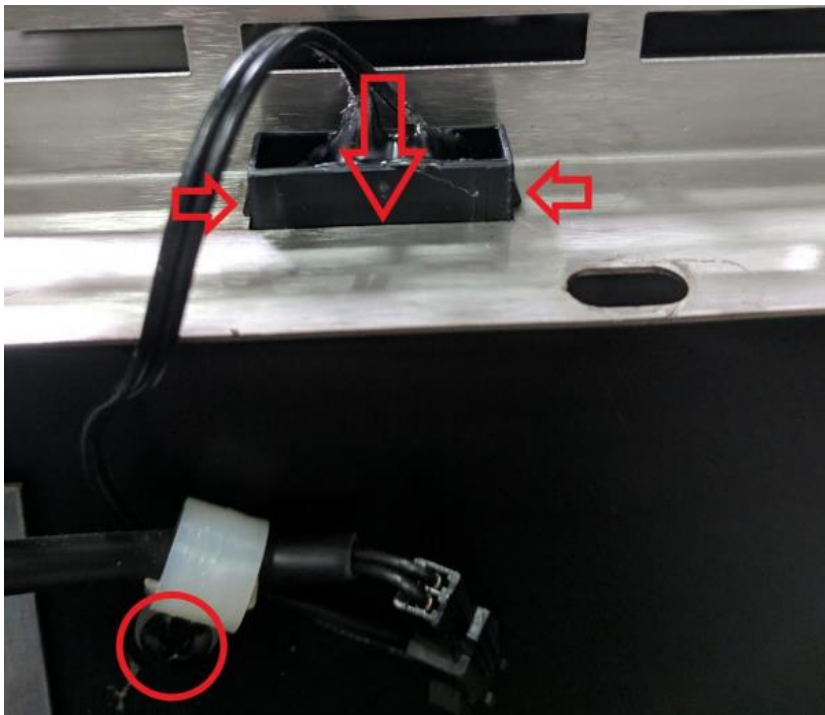
Step 2: Remove the kickplate mounting screws

- With a Phillips screwdriver remove the 4 screws that secure the kick plate to the unit



Step 3: Remove the magnetic door sensor from the kickplate

- Remove the screw from the wire clamp
- Disconnect the electrical connectors from the back of the switch
- Push the locking tabs in on the both sides of the switch to release it from the kickplate
- Slide the sensor out through the top of the kickplate

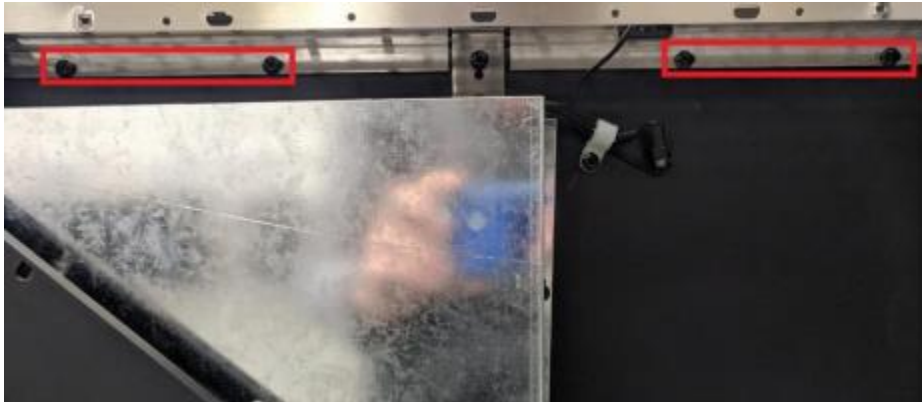


Step 4: Install the magnetic door sensor into the new kickplate

- Slide the sensor in from the top of the kickplate until the locking tabs click and lock into place
- Install the electrical connectors for the magnetic switch
- Install the screw into the wire clamp

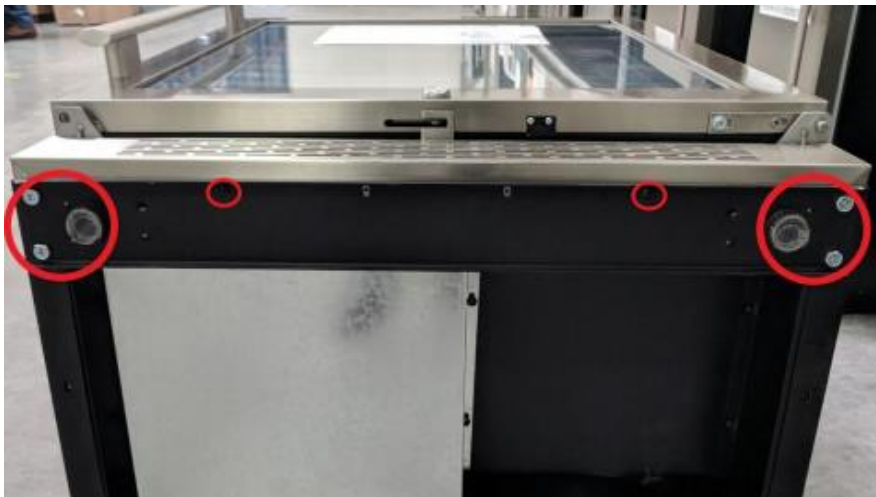
Step 5: Install the kickplate mounting screws

- With a Phillips screwdriver install the 4 screws that secure the kick plate to the unit



Step 6: Install the front cabinet bracket

- With a Phillips screwdriver, install the 5 screws securing the cabinet bracket to the cabinet
- Tighten the screw that was left loose to swing the bracket out of the way
-



Procedure Completed!